

Programme implementation challenges

Interreg Programme Management for Beginners

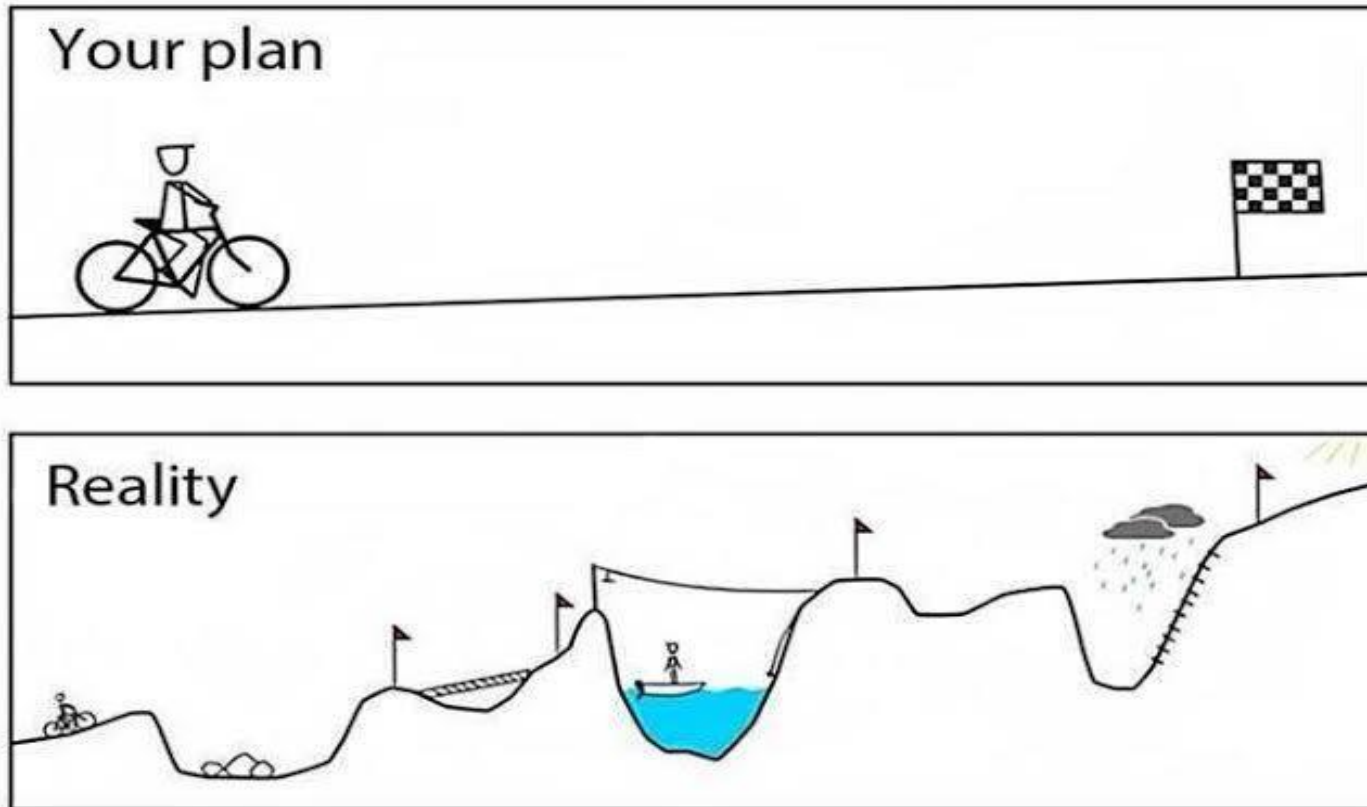
19 – 20 April 2017 | Stockholm, Sweden

 @InteractEU

Malgorzata Zdunek, Interact Programme



**Nothing goes as planned, but that is fine
provided someone controls the situation**



Project modifications and programme reactions

Modification	Programme reaction
Activity	Accepted, budget implications considered
Roles	Join implementation is not threatened
Partnership	Serious change
Outputs and results	Questioned
Time plan	Accepted, de-commitment considered
Budget	Flexibility of 10 – 20 %



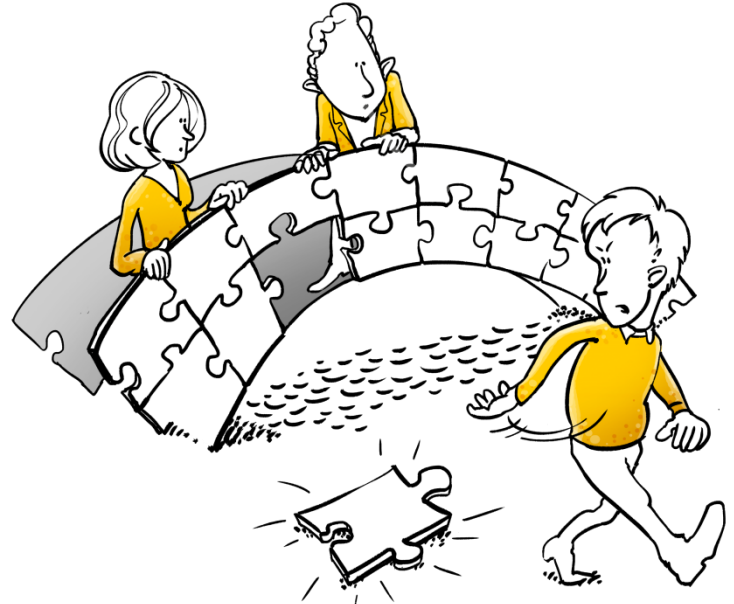
Modifications

Budget modifications:

- Budget line – Budget line
- Work package – Work package
- Partner – Partner
- Mixture of all above

Programme approval:

- Joint Secretariat
- Managing Authority
- Monitoring Committee



Questions asked by programme before modification considered

- Is it really necessary to implement this modification?
- What should be done in order to avoid this modification?
- The nature of modification (activity, partnership)?
- Who does it affect (1 partner, whole partnership)?
- Does it affect project budget?
- Does it affect project timeline?
- Is it dangerous for delivery of some outputs or results?



How to avoid modifications ?

- Define the responsibilities and procedures for day-to-day management and coordination
- Involve partner finance managers from the start
- Make sure reporting procedure is clear
- Have in place risk and quality management
- Make sure communication within partnership is smooth, open and honest



Unavoidable

Erupting volcano, fire in the office, flooded investment



Financial errors

Ineligible expenditure that is NOT deemed an irregularity:

- corrected before the submission MA/JS
- deducted by the MA/JS
- addressed by the CA

Errors do not decrease the project budget.



Irregularities

An ineligible amount that was **already included** in the claim to the European Commission is considered an irregularity.

- One-off or systematic
- Require programme level corrections in the form of withdrawals or recoveries.
- Can affect the project implementation:
 - further checks and/or
 - repayment of funds.

Irregularities decrease the project budget.



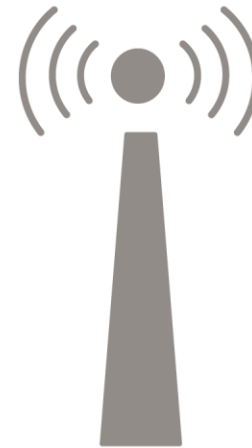
Main causes of irregularities

- Non-compliance with public procurement rules
- Calculation errors, wrong accounting, wrong budget line
- Infringement of “value for money” principle
- Not planned activities with no relevance to project
- Infringement of eligibility rules
- Weak audit trail.



Irregularities – high risk partners

- Large budget
- Inexperienced partners
- Partners in many projects
- High investment costs
- Private partners
- NGOs

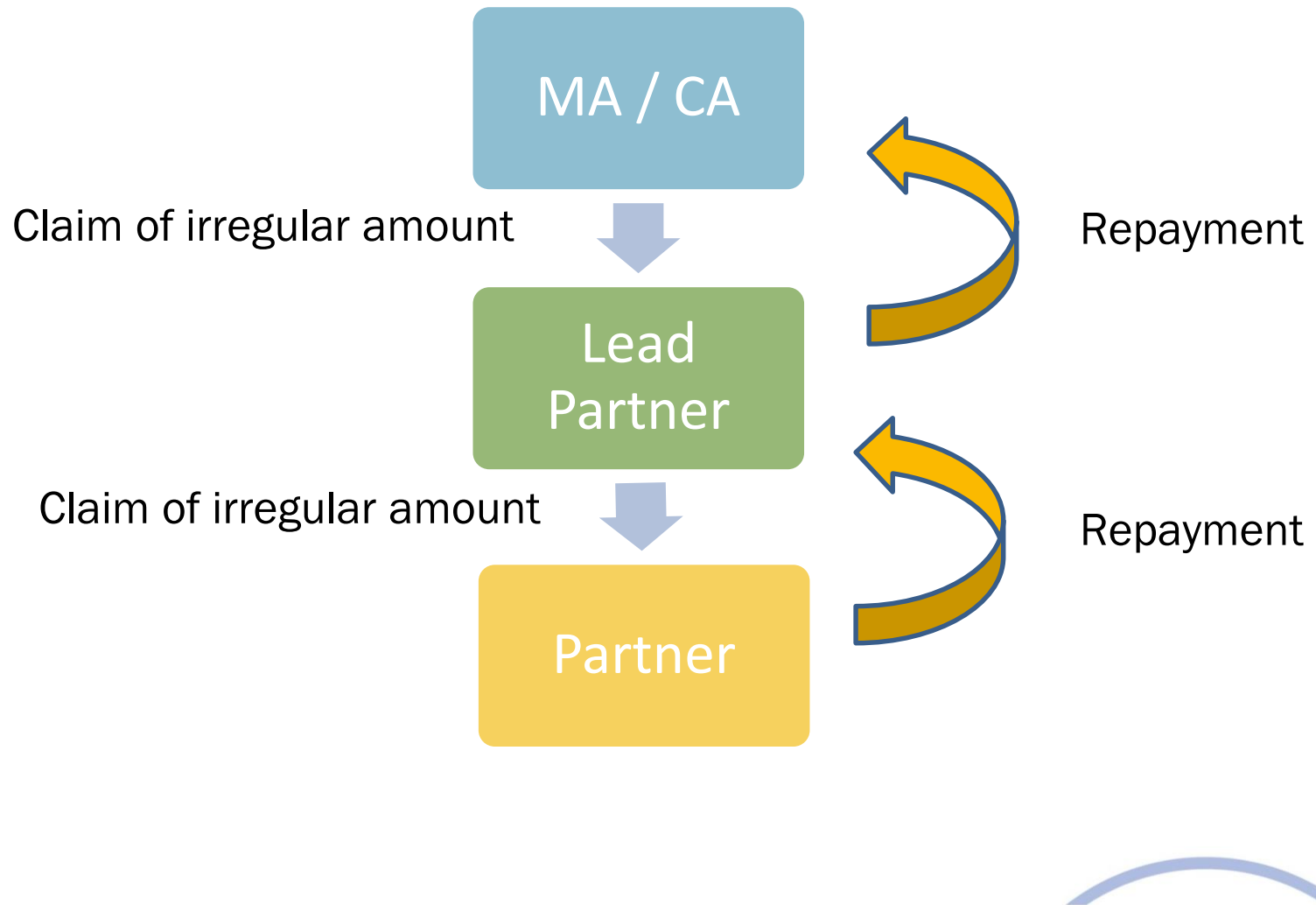


How to avoid irregularities

- Prevention – trainings, seminars
- Network of controllers
- Detailed guidelines
- Lead partners / controllers of LP to check quality of the project report

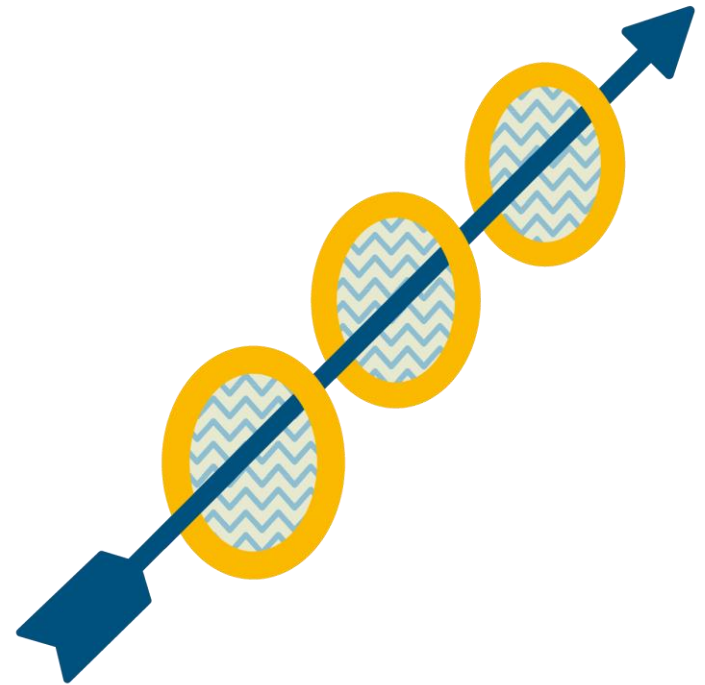


Recoveries



Other challenges

- Delays in implementation
 - Partners not following the rules
 - Bad or lack of communication
 - Queuing for verification
 - Discrepancies in interpretations
 - E-cohesion – electronic systems
 - Lack of funds at programme account
- ... floods, erupting volcanos ...



Cooperation works

All materials will be available on:

www.interact-eu.net

Contact: Malgorzata Zdunek, malgorzata.zdunek@interact-eu.net