

Interreg

How does it work?

Interreg Programme Management for Beginners
19 – 20 April 2017 | Stockholm, Sweden

 @InteractEU

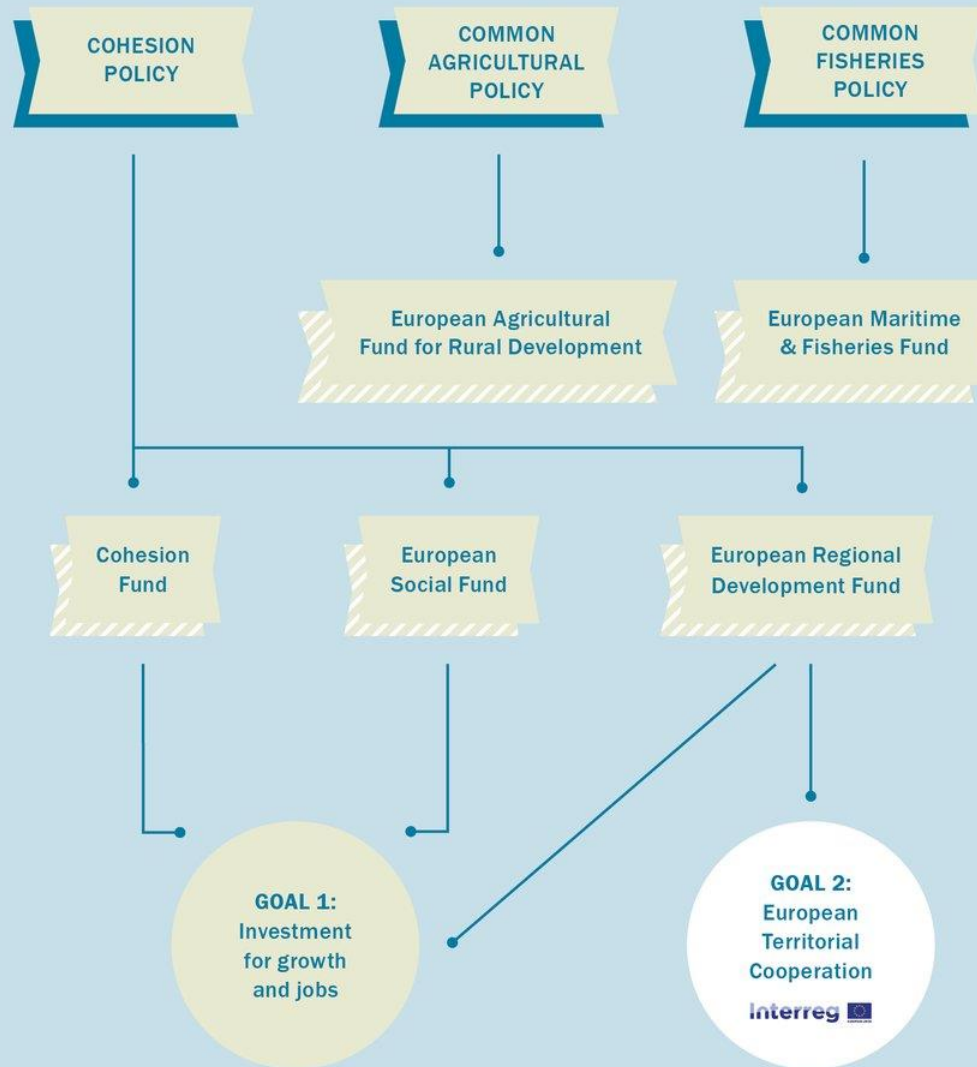
Ivana Lazic, Interact Programme



One programme in five offices to be close to you



European Structural and Investment Funds



GOAL 2: European Territorial Cooperation

Interreg 
EUROPEAN UNION

**Cross-Border
Cooperation
Programmes**

**Transnational
Cooperation
Programmes**

**Interregional
Programmes**

16 ENI
Programmes*

12 IPA
Programmes*

60 Programmes

15 Programmes

4 Programmes**

* In 2014 – 2020 Interreg co-finances regional development cooperation programmes outside the EU with participation of Member States. IPA stands for Instrument for Pre-Accession Assistance. ENI stands for European Neighbourhood Instrument.

** Interact is one of the 4 Interregional programmes.

Figure 3: Interreg V (2014–2020) at a glance

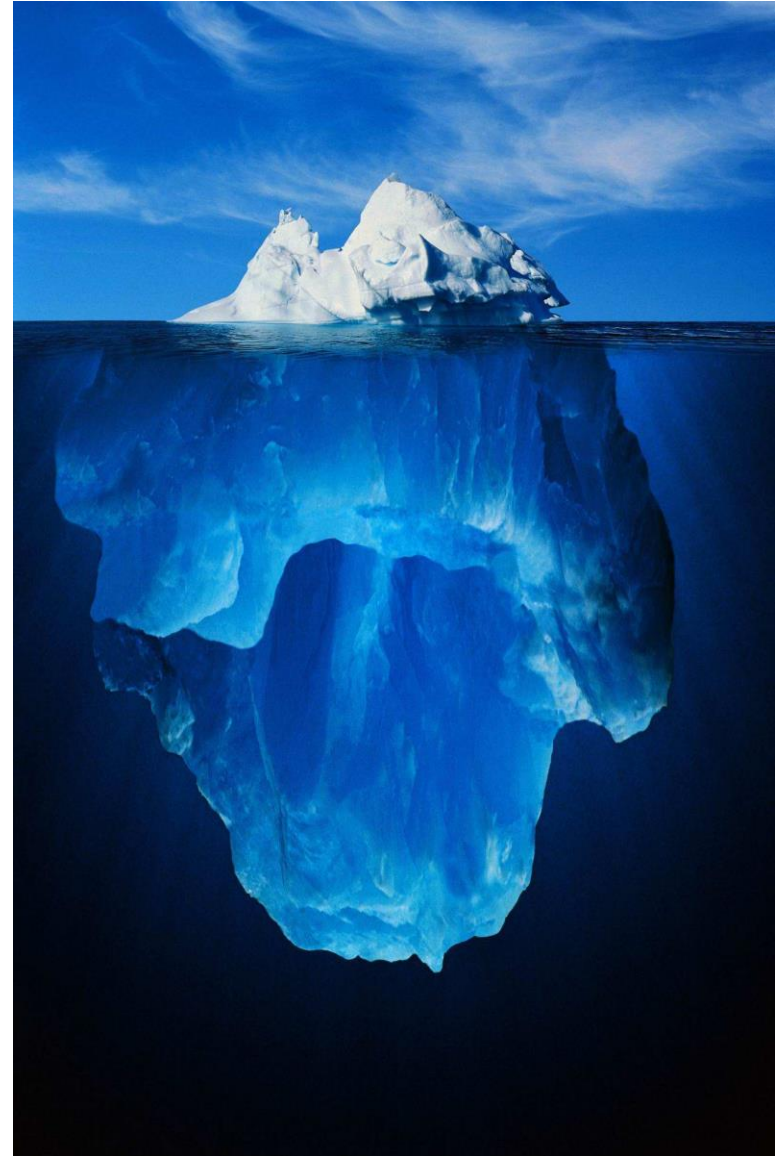


Source: based on European Commission, DG Regio (2014a), p.17

Special Interreg programme characteristics

- Two or more countries working together
- Mix of working cultures and languages
- Mix of project partner types & expertise
- Remote team work
- Programme rules and requirements: EU, programme, national (to be agreed between different MSs)
-

= *more complex management!*



2014-2020: Regulatory framework

Regulation on Financial Regulation/Implementing
applicable to the general budget of the European Communities

CPR 1303/2013

- ▶ ERDF Regulation: 1301/2013
- ▶ ETC 1299/2013
- ▶ EGTC 1082/2006 1302/2013 (revised)

- **Joint Monitoring Committee (Steering Committee)**
- **Managing Authority (MA) → designation**
- **Certifying Authority (CA) → designation**
- **Joint Secretariat (JS)**
- **Audit Authority (AA) supported by Group of Auditors → designation**
- **Member States (Participating Countries)**




Role of Member States (Art. 74, 122 CPR)

Strategic role

- Sharing management of programmes with the Commission
- Nominate members of Monitoring / Steering Committees
- Jointly designate single MA, CA, AA (Art. 123 CPR; according to the designation procedure of MS where MA is located)
- Set up electronic data exchange system
- Provides national co-financing

Operational role

- **Ultimate responsible for the expenditure and all activities carried out on a its territory** (Art. 122 Reg CPR)
 - Responsible for setting up of a management and control systems and function effectively (FLC=designate controllers)
 - Preventing irregularities and recovering of unduly paid amounts not recovered by beneficiaries
 - Issues national eligibility rules and provide information
- 

Joint Monitoring Committee (JMC)

Article 49 CPR


- Supervises the programme by **deciding, monitoring and adjusting programme implementation, evaluation and strategy** (effectiveness, quality, coherence, and meeting programmes objectives)
- Examines all issues affecting the **performance**
- Monitoring by reference to programme's **indicators** (Art. 16 ETC)
- Decides on **selection of projects** → may set up a steering committee acting under its responsibility for the selection of operations
- Examines and approves implementation reports, evaluation plan, communication strategy, amendments of programmes
- Shall establish additional **rules on eligibility** of expenditure for a programme as a whole



Managing Authority (MA)

Articles 23 (1,4,5) ETC & 125 CPR

Managing the programme in accordance with the principle of sound financial management

- Support the work of the Joint Monitoring Committee
 - Establish and maintain a **system for recording and storing the data** on implementation of projects necessary for financial management, monitoring, verifications, audits and evaluation;
 - Prepare and submit to the EC the annual and final reports on implementation
 - Ensure that operations are approved, delivered and monitored in compliance with the agreed criteria
 - Drawing up the selection criteria
 - Organising the process for selecting projects for funding;
 - Signing the Subsidy Contract with Lead Beneficiary
- 

Joint Secretariat (JS)

Article 23 (2) ETC

- The MA, after consultation with MS, shall set up a joint secretariat
- **Assist the managing authority and the monitoring committee** in carrying out their respective functions
- The joint secretariat shall also provide information to **potential beneficiaries** about funding opportunities under cooperation programmes
- **Assist beneficiaries** in the implementation of operations. Provides help and support to projects at all stages => some programmes also have National Contact Points/JS Antennas
- Responsible for generating proposals, processing applications, organising project assessment and making proposals for selecting projects to the selection committee, reporting



Certifying Authority (CA)

Articles 24 ETC & 126 CPR

- Certifies and draws up **payment claims** to the Commission
- Receives funds and makes payments to Lead Beneficiaries
- Ensures that there is computerized system which records and stores accounting records for each operation
- Maintains computerized accounting records (expenditures declared to the Commission, corresponding public contribution paid to beneficiaries)
- Supervises the MA by ensuring that systems and documentation are in place
- Keeps an account of amounts certified, recoveries, withdrawals



Audit Authority (AA)

Articles 25 ETC & 127 CPR

- Ensure that **audits** are carried out on the proper functioning of the management and control system of the programme and on appropriate sample of operations (in line with internationally accepted auditing standards and in accordance with an audit strategy)
- Prepares and updates an **audit strategy** for performance of audit
- Prepare an audit opinion and control reports
- At the end of the implementation of a programme, the audit authority shall prepare a final audit activity report and provide an audit opinion on the final statement of expenditure
- Is supported by Group of Auditors



Living together in an ideal world



- MSC = Monitoring and Steering Committee
- MA = Managing Authority
- JTS = Joint Technical Secretariat
- CA = Certifying Authority
- AA = Audit Authority
- LP = Lead Partner
- P = Partner



Phases of programmes and projects

