
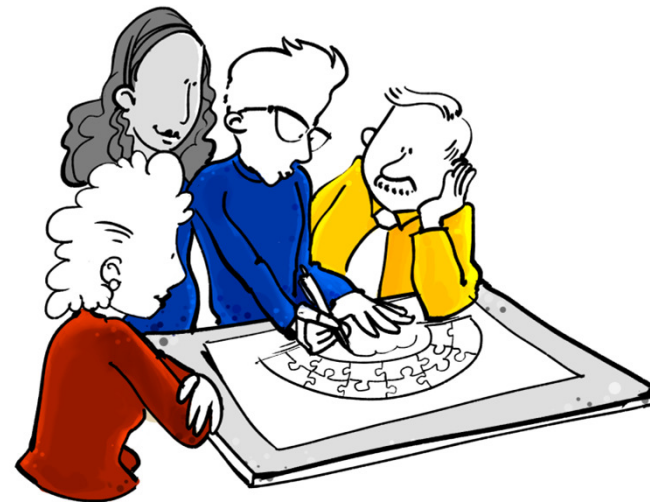


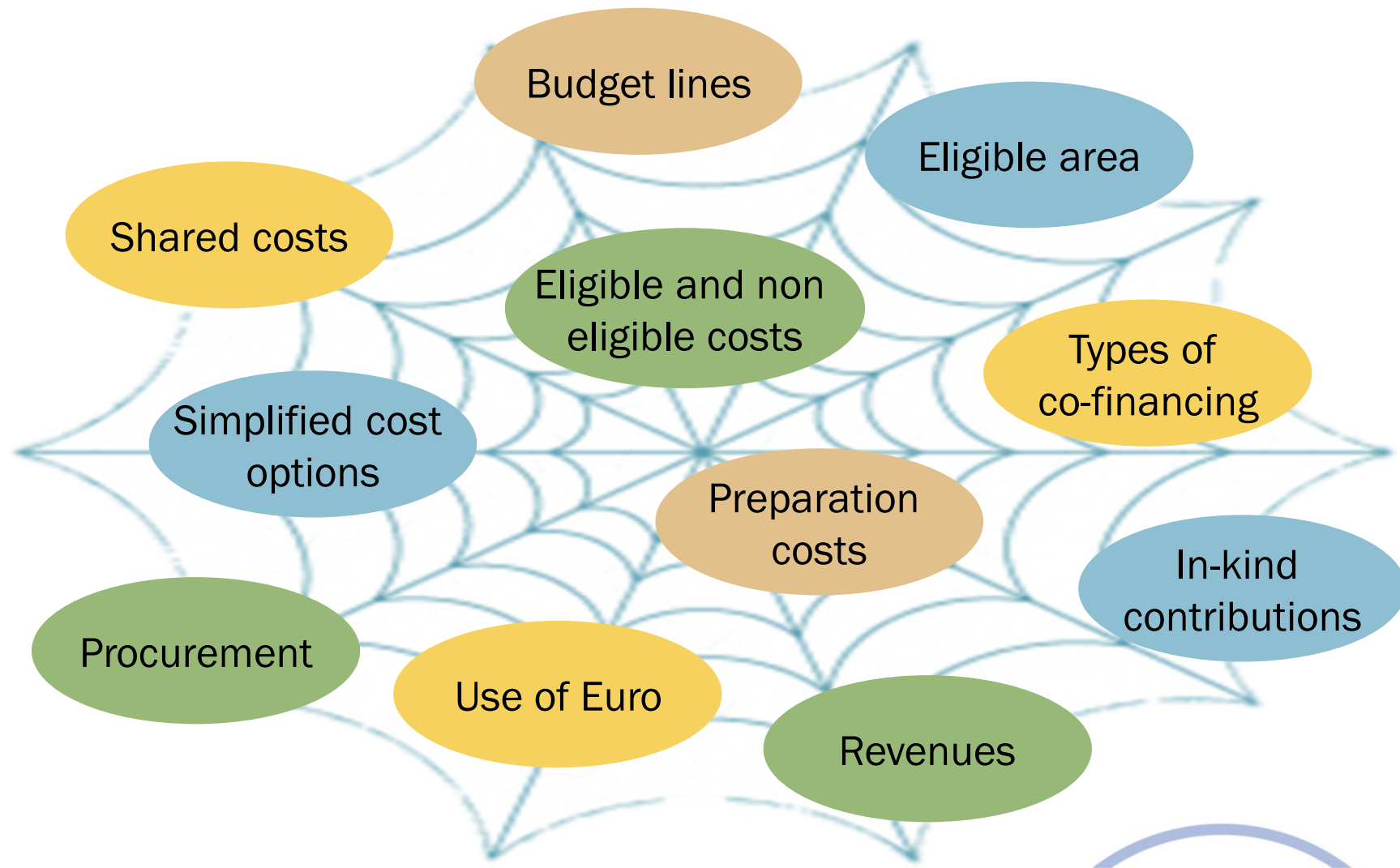
Project Development - Budget Planning

Interreg Financial Management Camp
28 February - 3 March 2017 | Athens, Greece
 @InteractEU

Malgorzata Zdunek, Interact Programme



What applicants should know?



Financing sources

Programme co-financing <ul style="list-style-type: none">• ERDF, IPA II, ENI• ERDF equivalent	The programme financial support to the project. Depending on the programme, this entails support from EU funds (ERDF, IPA II, ENI) and ERDF equivalent (e.g. ,Norwegian fund, Swiss fund, etc.).
Co-financing rate (%)	The maximum rate of programme co-financing (separate for EU funds and each ERDF equivalent).
Contribution <ul style="list-style-type: none">• public• private	Counterpart to programme co-financing secured by the partners (paid by the partners from their own resources, or paid to the partners from external sources).
Automatic public contribution	Public funding automatically allocated to a project partner from national/regional sources, external to the partner organisation.



Preparation costs

- Lump sum or real costs
- Granted only after project approval or granted anyway

Shared costs

- Some services procured by 1 partner but costs of service shared among all / some partners
- 1 partner pays, costs are spreaded between number of partners and the cash flow between partners is organised



In-kind contributions

- Office space
- Voluntary work
- Services

Revenues

- Income gained by a project caused by projects activities / outputs
- Fees collected
- Selling products



Procurement

- Finding and purchasing goods or services via a tendering or competitive bidding process.
- Public procurement rules vary substantially from one country to the other, especially below the EU threshold for public procurements.
- Interreg applies national, regional and institutional and programme-specific public procurement rules

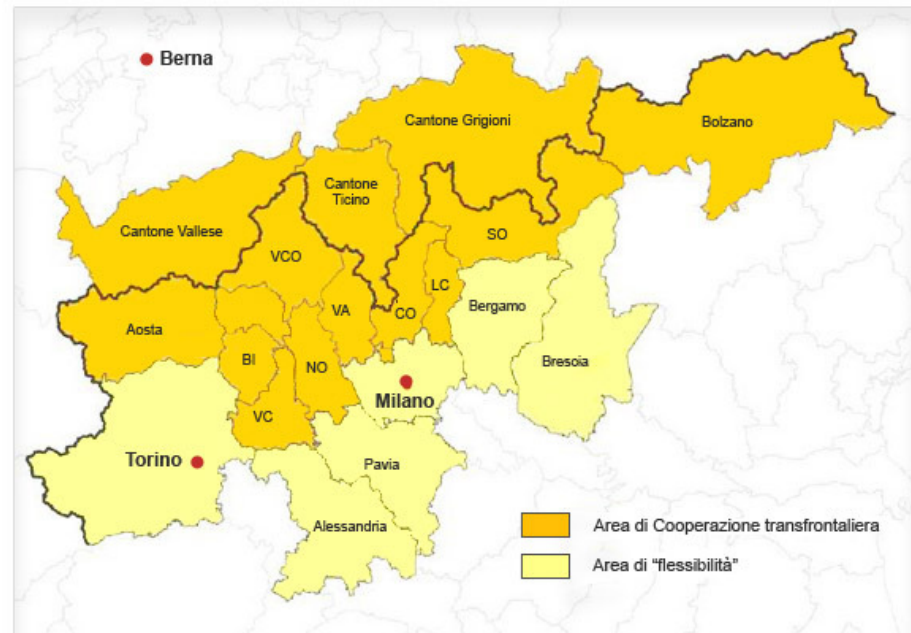


Eligible area

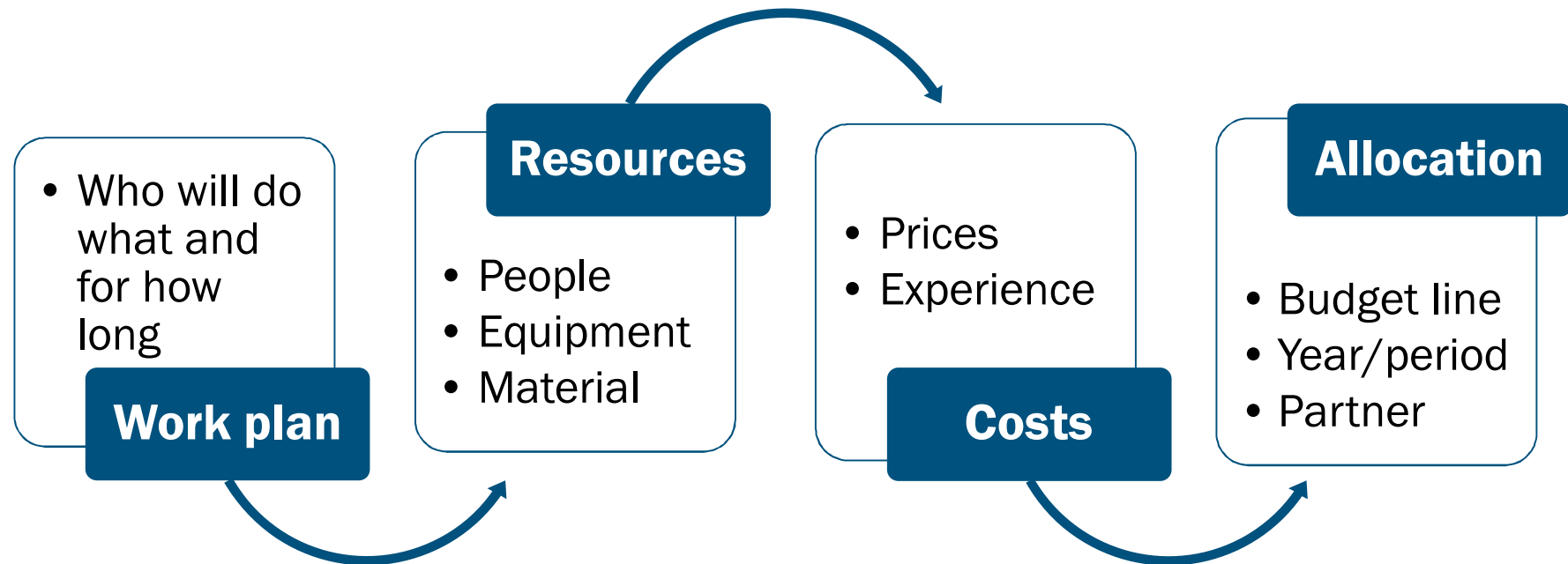
- Location of operations and expenditure incurred: in the Union part of the programme area.
- Exception: *outside the Union part of the programme area (both inside and outside the EU) under conditions*

Conditions:

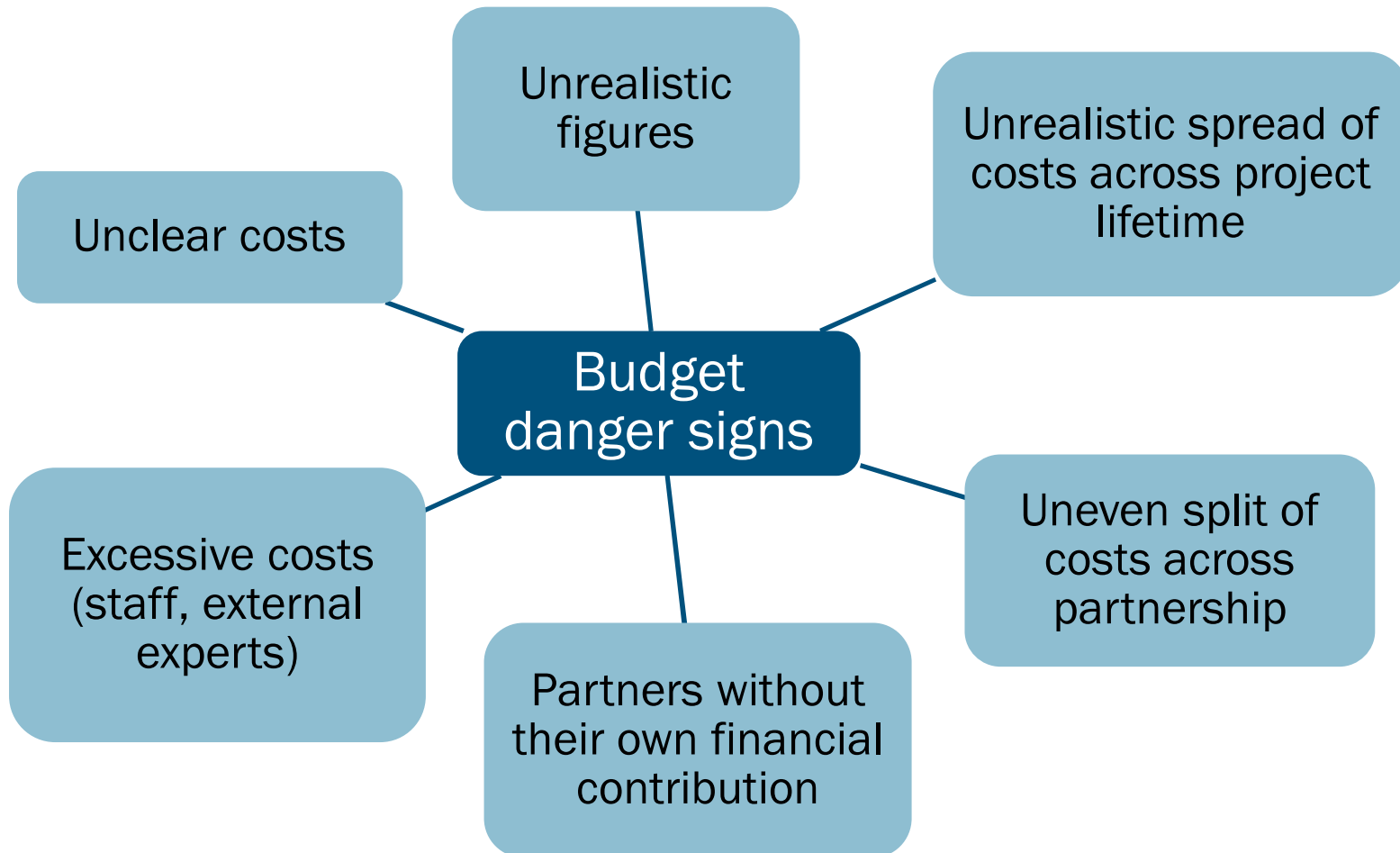
- Operation is of benefit for the programme area
- Ceiling of 20% of the Union support to all operations outside respected at programme level
- Management, control and audit obligations



Budget planning steps



Project budget danger signs



Cooperation works

All materials will be available on:

www.interact-eu.net

Contact: Malgorzata Zdunek, malgorzata.zdunek@interact-eu.net