
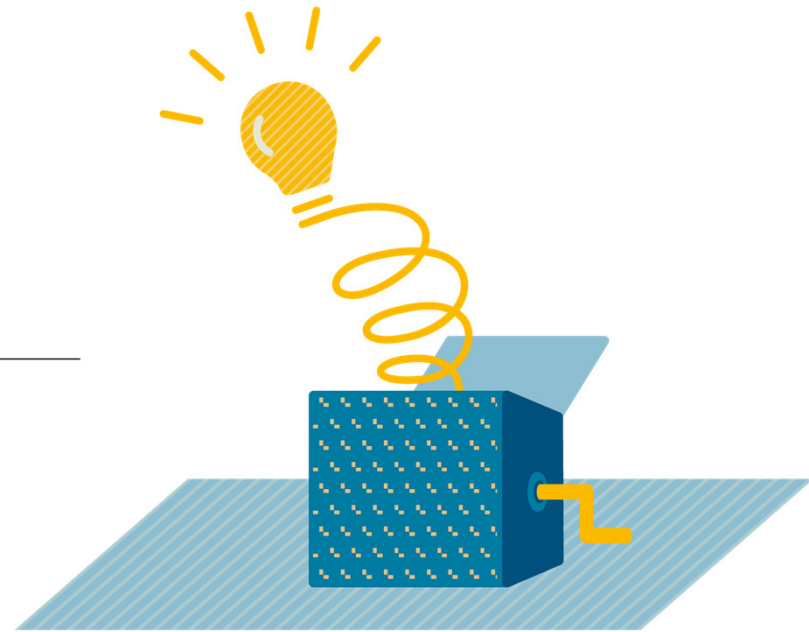


# Project Idea Generation

---

Interreg Finance Management Camp  
28 February – 03 March 2017 | Athens, Greece  
 @InteractEU

**Robert Mazurkiewicz, Interact Programme**



# Inspiration

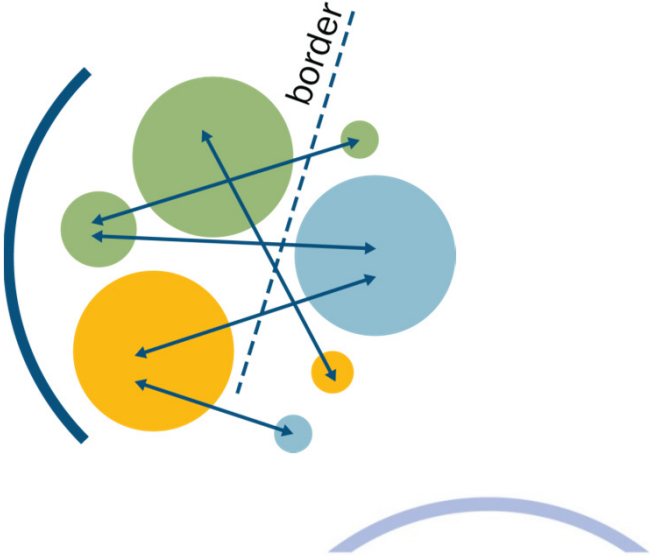
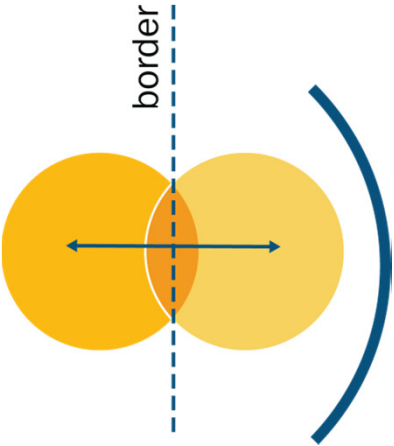
Every project starts with an **idea** which is inspired by a **need** or a **problem** that has been insufficiently solved, or not solved at all.

The Interreg context

**joint need**

vs.

**common need**



# Partnership

There is no one golden solution for the right partnership.

It depends on what is to be achieved.

In general, the right partners are those who can turn your idea into a unified set of activities and convincing results.

Key criteria for partners are:

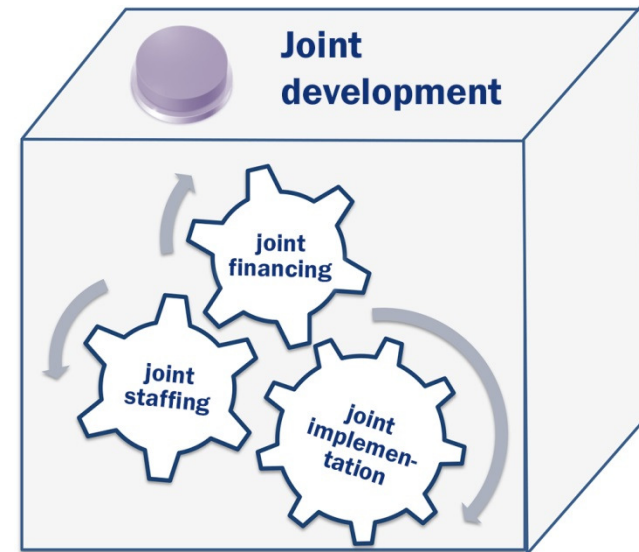
- Shared needs and complementary expertise
- Knowledge of the relevant issues
- Commitment, enthusiasm and trust
- Financial reliability

**Partnerships must not be put together  
to impress the programme!**



# Partner roles

- Lead partner
- Project partner
- Assimilated partner
- Associated partner / Observer



- Project manager
- Work package leader
- Working group leader



# The Lead Partner Principle



The Lead Partner Principle (LPP) is one of the most important features of Interreg programmes.

The lead partner is the formal link between the project partners and the respective programme.

Main (key) responsibilities:

- Partnership-building process.
- Formulating objectives together with other partners; project plan and structure of activities.
- Coordinating between project partners, keeping them involved and ensuring that their suggestions are taken on board.



# Responsibilities: LP vs PP

	Lead partner (LP)	Project partner (PP)
Project idea generation	<ul style="list-style-type: none"> <li>Owner of the idea (usually)</li> <li>Coordinates the process</li> </ul>	<ul style="list-style-type: none"> <li>Actively involved</li> </ul>
Project development	<ul style="list-style-type: none"> <li>Coordinates the process</li> <li>Signs and submits the application</li> </ul>	<ul style="list-style-type: none"> <li>Actively involved</li> <li>Provides necessary doc</li> </ul>
Contracting and start-up	<ul style="list-style-type: none"> <li>Coordinates clarification process</li> <li>Signs subsidy contract</li> <li>Prepares partnership agreement</li> </ul>	<ul style="list-style-type: none"> <li>Signs partnership agreement</li> </ul>
Project implementation	<ul style="list-style-type: none"> <li>Overall coordination</li> <li>Verifies expenditures and submits progress reports to the programme</li> <li>Receives payments from the programme</li> <li>Transfers funds to the partners</li> </ul>	<ul style="list-style-type: none"> <li>Implements assigned activities</li> <li>Ensures that expenditure has been certified</li> <li>Submits reports to the LP</li> </ul>
Project closure	<ul style="list-style-type: none"> <li>Pays back any amounts which have to be recovered to the programme, and recovers these funds from the PP</li> </ul>	<ul style="list-style-type: none"> <li>Responsible and liable for irregularities in the expenditure it has declared</li> </ul>

# Cooperation works

All materials will be available on:

[www.interact-eu.net](http://www.interact-eu.net)

---

**Contact: Robert Mazurkiewicz, [robert.mazurkiewicz@interact-eu.net](mailto:robert.mazurkiewicz@interact-eu.net)**