

Interreg response to migration challenges



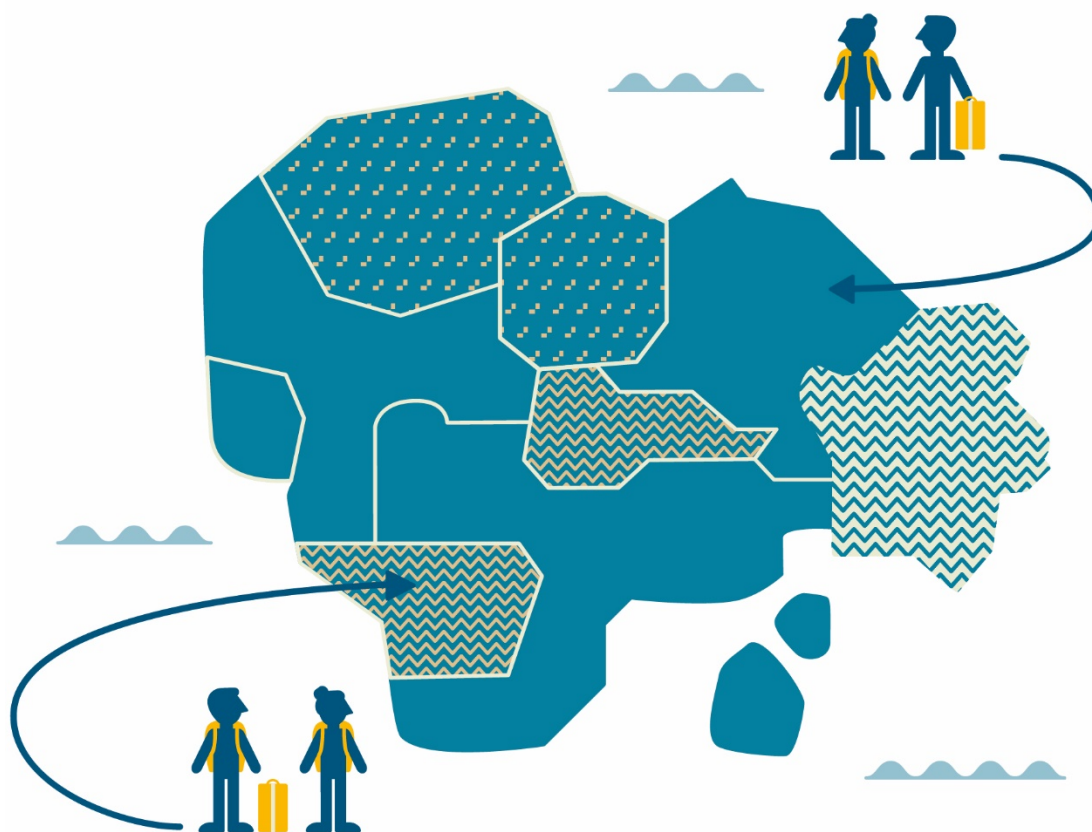
Final Agenda

1 February 2017

European Commission - DG Regio (ROOM BU-1 01/082)

Avenue Beaulieu 1, B-1160

Brussels, Belgium





Interreg response to migration challenges

1 February 2017

Brussels, Belgium

Background

During the last meeting in Vienna, Interreg programmes have expressed their increasing interest to investigate more what is the specific role of Interreg in addressing the current migration crisis. The Interreg role is now slowly being developed with more concrete steps being taken by numerous programmes, especially in the long-term. Still, there is a number of outstanding issues and relevant implementation questions that need to be tackled and answered.

After several exchanges and updates, it is now time to meet again and go deeper to define the role that Interreg programmes could play and the activities that could be financed.

Objectives

Building on the outcomes of our last meeting in Vienna, and in close cooperation with EC services, this network's meeting is aimed at providing deeper information on policy agenda developments, with the involvement of relevant EC DGs and stakeholders.

The meeting will provide specific thematic knowledge about migration issues, as well as answering to the main expectations and questions raised by programmes at previous meeting.

The methodology to achieve these objectives will be based on peer learning and exchange among Programmes and relevant stakeholders that will be invited, such as:

- representatives of Interreg programmes.
- representatives of EC DGs and Agencies dealing with refugees/migrants issues: HOME, EAC, EMPL, SANTE, GROW, JRC, REGIO, NEAR, Fundamental Rights Agency, EEA/NO grants, etc.,
- the coordinator of the Migration chapter in the urban agenda (Action Plan to be ready by March 2017),
- representatives of the relevant civil society actors

Contents of the meeting will be based on the analysis of the answers from the participants in the registration form. Please fill it:

<http://forms.interact-eu.net/migration-february-2017>



Interreg response to migration challenges

1 February 2017

Brussels, Belgium

Thursday, 1 February 2017

09.30-10.00

Registration and Welcome coffee/tea

10.00-10.15

Welcome and Introduction

Objectives, main expectations of the meeting - *Interact*

10.15-11.30

State of play of Migration Agenda and related initiatives

- *EU Policy framework for Integration of third-country nationals – EC DG HOME, Mrs Agnese Papadia*
- *Gaps in human right protection - Fundamental Rights Agency, Mr Miltos Pavlou*
- *Urban Agenda for the EU, Partnership on integration of migrants and refugees – City of Amsterdam, Mr Mark Boekwijt*
- *Role of EU funds and creating synergies – EC DG EMPL, Mrs Marie-Anne Paraskevas and Mrs Dorota Ptak-Kroustalis*

Coffee break

11.30-12.15

Projects' examples Projects' presentations

- *Interreg Alpine Space Programme, PlurAlp Project, Mr Robert Moosbrugger*
- *Brussels Region 2014-2020 ERDF Programme:*
 - *The OP modification – Brussels Region ERDF Unit, Mr Quentin Richard*
 - *Example of financed project - Medecins du Monde, Mrs Isabelle Heymans and Mr Pierre Verbeeren*

12.15-13.15

Discussion - World Café

The objective of this session is to discuss how Interreg programmes can contribute to the long-term integration of migrants

- *Reception (experts from DG REGIO, DG HOME, DG NEAR): this WG will focus on concrete topics and direct questions related to the reception of migrants, setting up of shelters and hotspots. In this WG it should be defined what are the possible actions that Interreg programmes may undertake to coordinate with local authorities and other initiatives at borders.*
- *Access to services for children (experts from DG REGIO, DG EAC, DG SANTE, DG HOME): this WG will focus on the possible actions that could be undertaken for a better access to services for children, such as education, health, social, recreational (sport, arts, music) to prevent risk of institutionalization and foster integration.*
- *Social and labour market integration (experts from DG REGIO, DG EMPL, DG GROW): this WG will focus on possible actions related to the insertion and inclusion of migrants in local labour markets. Interreg programmes*



Interreg response to migration challenges

1 February 2017

Brussels, Belgium

may undertake analysis or pilot projects targeted to migrants (also involving SMEs).

13.15-14.00	Lunch break
14.00-14.15	Wrap up from the morning sessions
14:15-15:30	Q&A and open discussion on the open topics raised by programmes
15.30-16.00	Networking Coffee
16.00	Closure of the meeting