

From BAMOS to BAMOS+: Embedding partner reports



IT Tools and Monitoring Systems Network meeting

Split | 4-5.10.2023

Robert Schulz, Václav Kaplan



Overview

- BAMOS+ - The monitoring system of BSR
- Dependencies and other challenges
- Live demonstration



BAMOS+ - The monitoring system of the Baltic Sea Region Programme

Programme area
9 countries

EU Member States

Denmark
Estonia
Finland
Germany
Latvia
Lithuania
Poland
Sweden

Non-EU States

Norway



Co-financing rates

EU partners
receive up to 80%



Norwegian partners
receive up to 50%



European Regional Development Fund & Norwegian
funding EUR 235.7 million in 4 priorities
(incl. EUR 232.4 million ERDF funds)

163.5 million

committed

72.2 million

remaining



156 million
of EU funding
in 85 projects.

Total number of
partners

884

Share of
newcomers



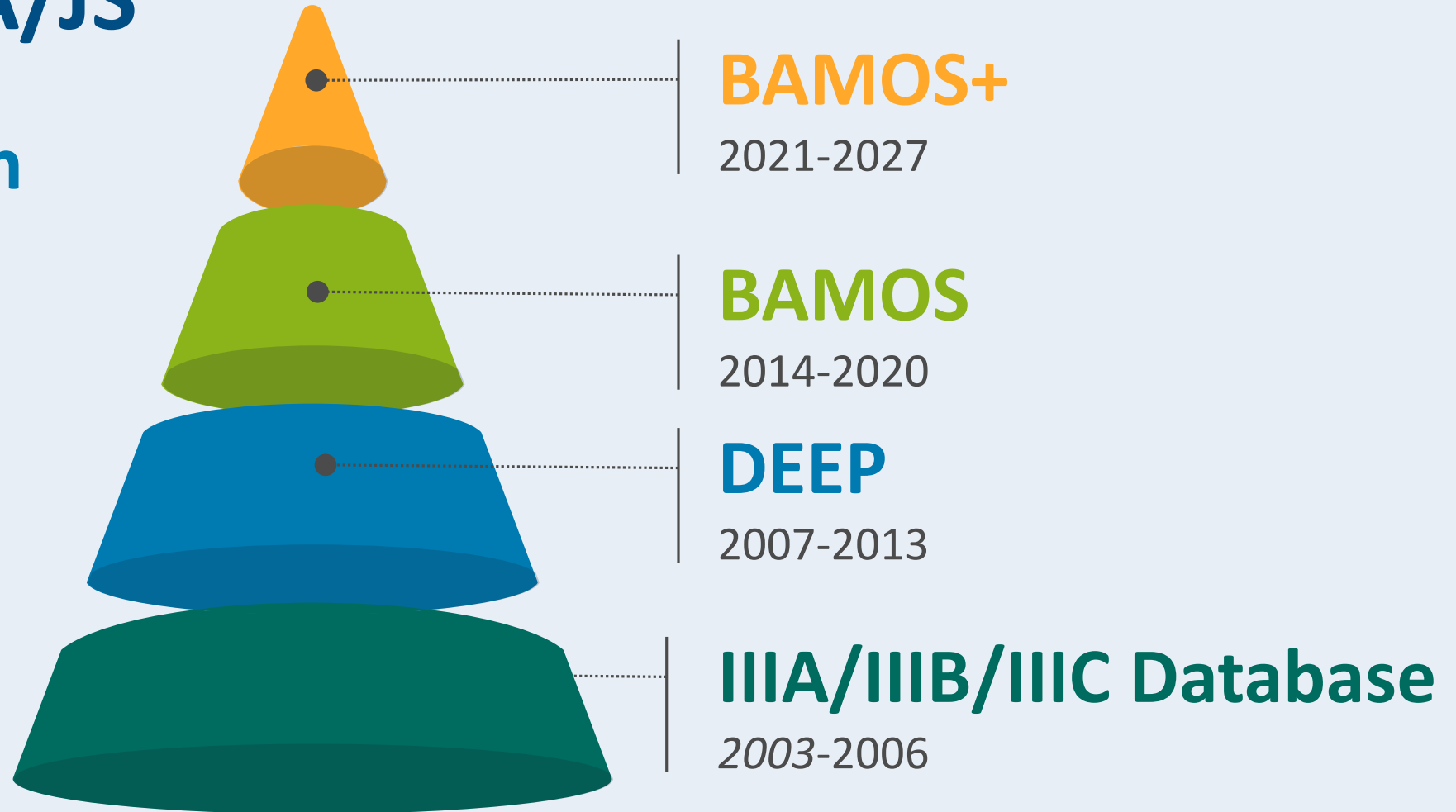
+ Support
for Strategy
governance

5.3 million
European
Regional
Development
Fund

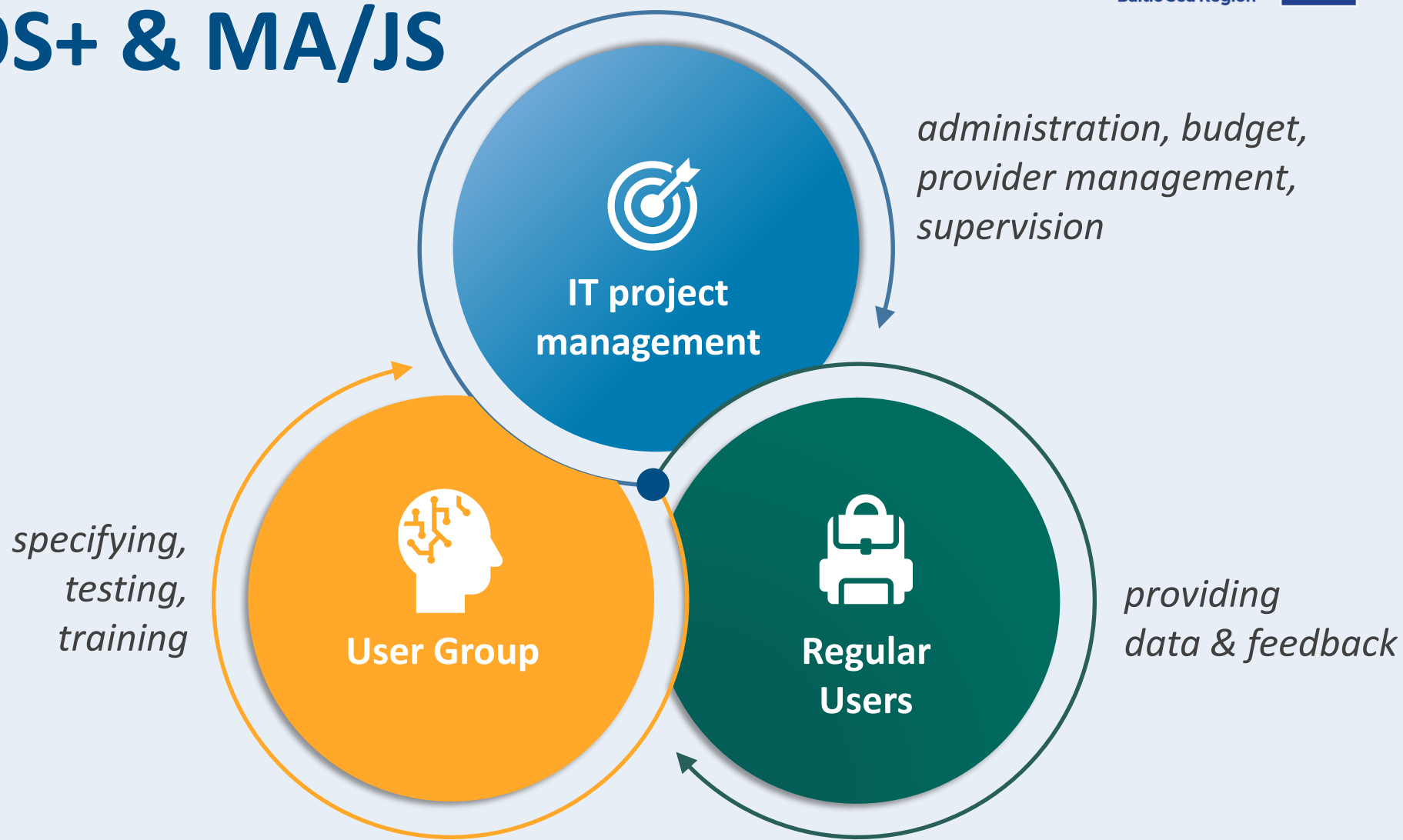
Monitoring Systems in Rostock's MA/JS

Main changes in BAMOS+

- Complete Modularisation of Application Forms
- Embedding partner reporting



BAMOS+ & MA/JS





Dependencies and other challenges

Partner reports

Data flow – lets make it simple but ...

Partner reports (PPRs)

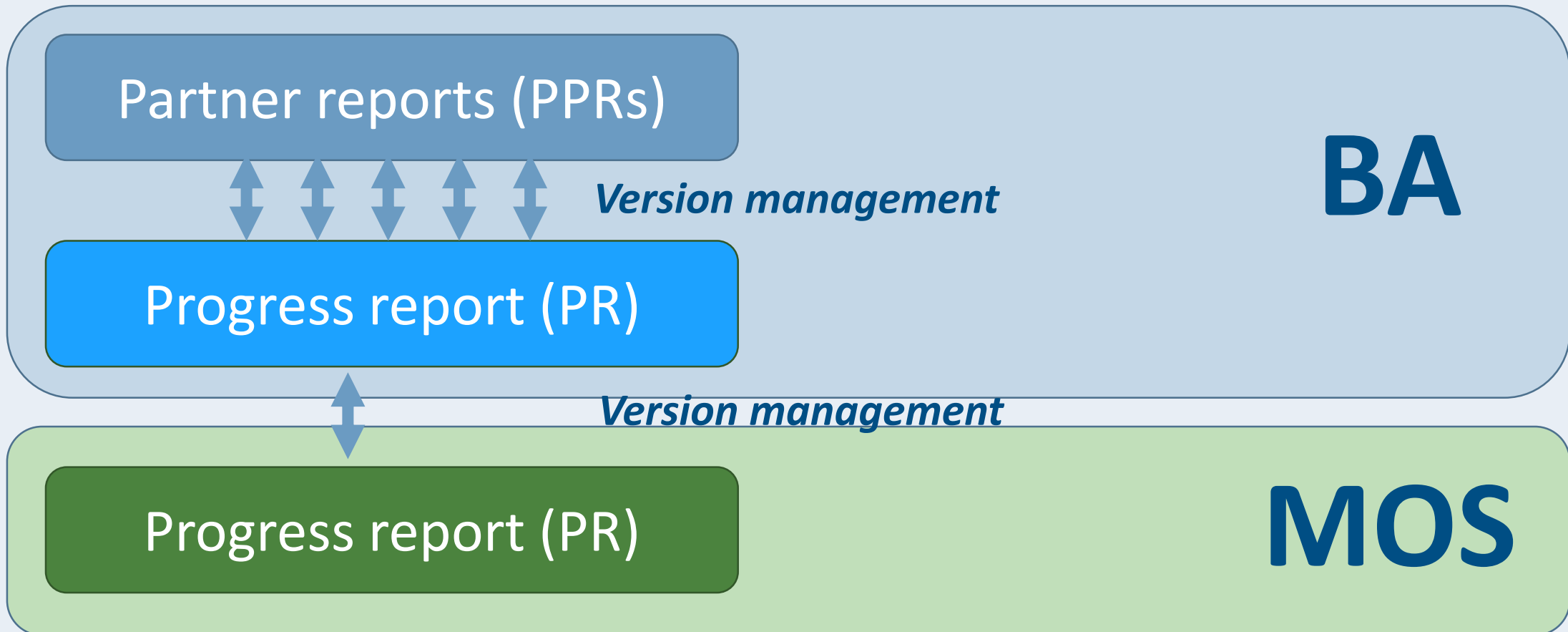


Progress report (PR)



Partner reporting

Data flow -> BA (projects) vs. MOS (MA/JS)



Partner reporting

Pre-filling of data

~~Progress report~~

Call management

Project type, relevant cost categories, unit costs, duration...

Application form

Partner identification, groups of activities, investments, VAT status

Inforeuro

Exchange rate

Partner
report
(PPRs)



Partner reports

Verification of costs

Partner report

PPR A. Activities + B. SCO

PPR C. Real costs

Verification of SCOs
by MA/JS

PPR C. Control certificate

Verification of real costs by
national controllers

Progress report



Partner reports

Further challenges...

Numbering?!

Documentation of
corrections?

Annex XVII of CPR:
Unpaid work,
purchase of land,
UBOs ...

User management:
LP + PP;
Controller +
Designation body...





Partner reports in BAMOS+ Live demonstration

(test project KETRAS)

interreg-baltic.eu
interreg-baltic.eu/projects
matchmaking.interreg-baltic.eu

interreg-baltic.eu/subscribe-newsletter
facebook.com/InterregBSR
twitter.com/InterregBSR
linkedin.com/company/interregbsr
instagram.com/interreg.bsr
youtube.com/user/BSRprogramme

The Programme is managed by **Investitionsbank Schleswig-Holstein (IB.SH)** in Kiel, Germany.

Investitionsbank Schleswig-Holstein
Interreg Baltic Sea Region
Managing Authority/Joint Secretariat

Grubenstraße 20, 18055 Rostock, Germany

Tel: +49 381 454 84 5281

E-mail: info@interreg-baltic.eu





Terms of use

This presentation has been developed exclusively for the purposes of the EU funding Programme **Interreg Baltic Sea Region** managed by **Investitionsbank Schleswig-Holstein (IB.SH)**.

You are allowed to use the texts, diagrams and flow charts for developing, managing and promoting Interreg Baltic Sea Region and its projects.

Please note that the **images and photographs contained in this presentation are copyrighted** and subject to the rights of third parties as mentioned in the respective reference below the image. If you plan to use these images/photographs you have the sole responsibility for obtaining appropriate licenses from the respective right holder.

