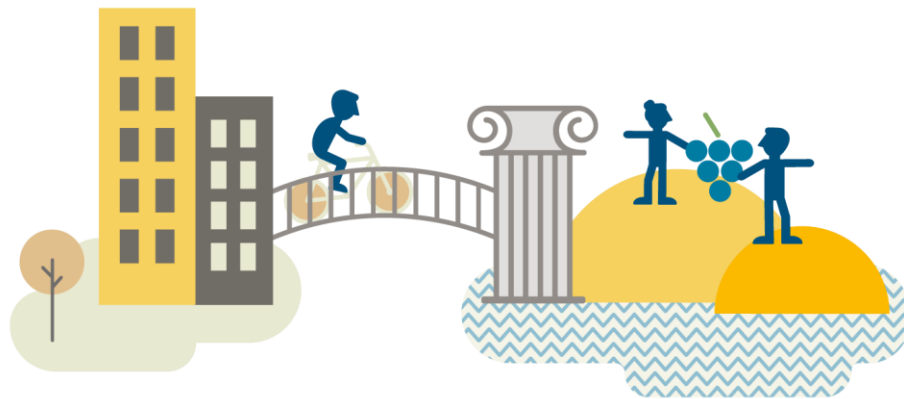


New European Bauhaus in Interreg



1 June 2022, 10.30 - 13.30 CET

Online
Agenda





New European Bauhaus in Interreg

1 June 2022, 10.30-13.30 CET

online

Outline

'The New European Bauhaus initiative calls on all of us to imagine and build together a sustainable and inclusive future that is beautiful for our eyes, minds, and souls. Beautiful are the places, practices, and experiences that are:

- *Enriching, inspired by art and culture, responding to needs beyond functionality.*
- *Sustainable, in harmony with nature, the environment, and our planet.*
- *Inclusive, encouraging a dialogue across cultures, disciplines, genders and ages.'*

(Quote from the website of the [New European Bauhaus](#))

Together with the colleagues from DG Regio and from the European Bauhaus we will provide you with more detailed and practical information about the New European Bauhaus. We would like to share and exchange perspectives and reflections to show how Interreg programmes can contribute to this new initiative. Therefore, we will present of the New European Bauhaus the four thematic axes, which will guide its implementation:

1. Reconnecting with nature: Examples can involve the physical transformation of places showing how new, renovated or regenerated built environment and public spaces may contribute to protection, restoration and/or regeneration of natural ecosystems (including soil and water cycles) and biodiversity. The use of nature-based solutions and materials could be important dimensions in the physical transformation.

2. Regaining a sense of belonging: Examples can involve the physical transformation of places showing how new, renovated, refurbished or regenerated built environment (including public spaces) can connect with local historical heritage and traditions or with local features of contemporary demographic realities, cultural and artistic dynamics and life styles. They can also illustrate how regenerative processes can contribute to restore pride or to shape future oriented ambitions for communities at local or regional level. The repurposing of spaces towards positive inter-generational exchanges and community-building could be important dimensions.

Examples can also involve the development of products, processes or business models that build on local culture, traditions, knowhow, craft and contemporary diversity and creativity. It may be fashion, furniture, or interior design, but also food or other elements of our daily life that carry a sense of belonging on a local scale. It can also involve the transmission of traditional knowledge, know-how and skills and its integration into new production or business models contexts.

3. Prioritising the places and people that need it most: Examples can involve the physical transformation and regeneration of territories, including small villages, rural areas, shrinking cities, degenerated city districts and de-industrialised areas. It can involve the development of ambitious social housing projects and the reconversion, renovation, regeneration of built environment to fight segregation and isolation, as well as address particular needs of groups and individuals who are the most vulnerable, for instance, at risk of exclusion or poverty or experiencing homelessness. Examples can also illustrate how the advanced implementation



New European Bauhaus in Interreg

1 June 2022, 10.30-13.30 CET

online

of “design for all” principle to the transformation of the built environment can address accessibility issues for people with disabilities, as well as address aging factors. Examples can also not involve any physical transformation but show how community services, new ways of bringing various communities (e.g. multigenerational settings) and/or various functions (housing, social inclusion, education and training, etc.) together can bring new solutions to address specific needs.

4. Fostering long term, life cycle thinking in the industrial ecosystem: Examples can involve the transformation of elements of specific value chains from the sourcing of raw materials to the recycling of waste in various ecosystems, from construction to textile and life style sectors (furniture, design, etc.). In that sense, new processes, new materials, sustainably sourced nature based solutions and products, or new business models bringing clear benefits in terms of sustainability and circularity, as well as in terms of quality of life for all could be relevant examples. Affordability and social inclusion aspects should be integrated here accordingly. Examples can also consist of projects addressing the education initiatives skills and challenges associated with the transformation of the industrial ecosystem towards more sustainability and circularity or promoting new economic models in particular in the social and proximity economy, as well as initiatives, which through the transformation of the industrial ecosystem or processes have also contributed to the overall socio-economic development of the locality/region.

All examples shall demonstrate in which way they combine, at the same time, contributions to sustainability, inclusion and quality of experience for people. They should also illustrate how they mobilise transdisciplinary approaches, build on participatory processes involving relevant communities and demonstrate replicability in the sense of providing local solutions to global challenges.

As a background information, we encourage you to have a look at the [New European Bauhaus website](#) to get first ideas about this initiative.

The target group of the meeting are managers from Joint Secretariats and Managing Authorities.

Registration

Please click [here](#) to register for the event.

Contact

Daniela Minichberger (daniela.minichberger@interact-eu.net)

Besiana Ninka (besiana.ninka@interact-eu.net)

Bernhard Schausberger (bernhard.schausberger@interact-eu.net)



New European Bauhaus in Interreg

1 June 2022, 10.30-13.30 CET
online

Wednesday, 1 June 2022

- 10.20 - 10.30** Arrival of participants to the online meeting room
- 10.30 - 10.40** **Welcome and introduction**
Interact
- 10.40 - 11.10** **Inspirational speech**
Luther Quenum, Public policies lab manager and designer
Presentation
- 11.10 - 11.30** **Introduction to New European Bauhaus**
Iulia-Mirela Serban, European Commission
Presentation and Q&A
The aim of this session is to present what New European Bauhaus is all about: what are the goals of the initiative and how does it connect to Interreg programmes, what are the requirements for Interreg programmes, what would be inspiring examples, what are practical tips, etc.
- 11.30 - 11.50** **Interreg Europe and the New European Bauhaus**
Nicolas Singer and Astrid Severin, Interreg Europe
Presentation and Q&A
The aim of this session is to present the possible contribution of Interreg Europe to the development of the New European Bauhaus
- 11.50 - 12.00** **Comfort Break**
- 12.00 - 13.25** **Inspiring projects: How could New European Bauhaus projects look like**
The aim of this session is to present concrete examples of projects fitting to the overarching principles of the initiative, which could be relevant for Interreg programmes. We will present these concrete examples along the four thematic axes of New European Bauhaus:

1. Reconnecting with nature: Room for the river Waal in Nijmegen (Netherlands): Mr. Schengenga, Sandra van Assen **Moderation: Bernhard Schausberger (Interact)**

Room for the river Waal is a landscape architecture/civil engineering project combining sustainability, aesthetics and inclusion aspects to tackle climate change adaptation through nature-based solutions (among others). Although it is not an Interreg project, it is outstanding because of the spatial quality (aesthetics) achieved via a Quality Team (Q-team) of planners and designers.



New European Bauhaus in Interreg

**1 June 2022, 10.30-13.30 CET
online**

2. Regaining a sense of belonging: LaFábrika detodalavida, Helena Ortiz Moderation: Nathalie Verschelde (DG REGIO)

LaFábrika detodalavida is a NEB 2021 winner in the category 'Regenerated urban and rural spaces'. The reconversion of the old factory was entirely self-funded by the collective through crowdfunding and smaller amounts of money from awards and grants, including from an INTERREG programme in 2016.

3. Prioritising the places and people that need it most: APROP Ciutat Vella: Proximity Temporary Affordable Housing, Mr Eduard Cabré Romans and Casarella Chiara (Interreg Central Europe) Moderation: Besiana Ninka (Interact)

APROP Ciutat Vella: Proximity Temporary Affordable Housing, (Barcelona): This project is a great example of NEB Prize 2021 winner in the category 'Modular, adaptable and mobile living solutions'. APROP is an affordable, sustainable, fast and high-quality housing programme providing evicted households with emergency accommodation in their own neighborhood. A lightweight, dry, modular and reversible construction system using reused shipping containers has been specially conceived to achieve high rates of energy efficiency and excellent architectural standards.

Interreg Central Europe: Housing/refugee project

4. Fostering long term, life cycle thinking in the industrial ecosystem, FCRBE - Facilitating the circulation of reclaimed building elements in Northwestern Europe, Michael Ghyoot (Rotor DC), Peter Campobasso, Interreg NWE Moderation: Ramses Grande Fraile (DG REGIO)

The Interreg North-West project FCRBE aims at promoting the adoption of reuse practice in the construction industry. For this, FCRBE has developed different tools (practical handbooks, documentary sheets, directory of reclamation dealers, etc.) and supported different ongoing projects to adopt reclamation and reuse aspects.

In addition, FCRBE has several completed or ongoing pilot projects where they show extraction/ integration of reused, circular materials, which are inspiring and catering for the three New European Bauhaus values. Moreover, their lead partner, Rotor DC, has some outstanding examples of designs involving reused building materials.

13.25 – 13.30

Wrap up and next steps