

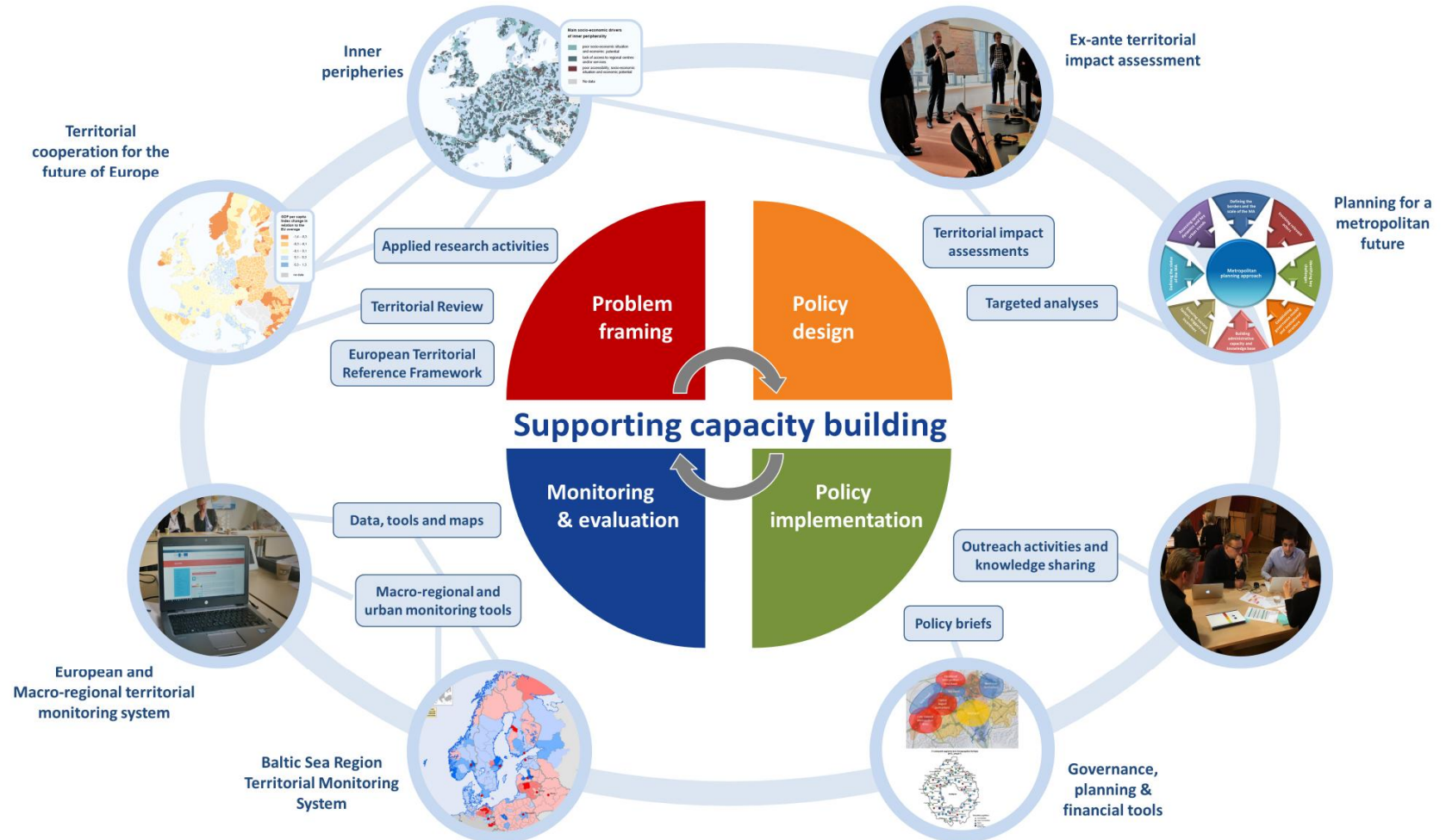
# // Coupling the TA 2030 with territorial evidence – that is easy!

Interact online seminar- Bringing territoriality into Interreg

Nicolas Rossignol  
Head of Unit for Evidence and Outreach / ESPON EGTC  
16 March 2021

# How to make ESPON evidence accessible for implementing and monitoring TA 2030 ?

European, national, regional and local scales



# What can ESPON do for TA pilot actions?

- Short-term (end of ESPON 2020 Cooperation Programme)
  - Tailored infopacks gathering ESPON territorial evidence
  - Support for partnership building, activating ESPON networks
  - Quick support through: case study, peer learning, transnational seminar
- Long-term (future ESPON 2030 Programme):
  - Filling of knowledge gaps through tailor-made ESPON territorial evidence
  - Addressing specific policy questions through ESPON targeted analyses and case studies

# Cooperation approaches with the Interreg community

## WHAT CAN ESPON DO FOR US?

- Initiate the translation of outcomes in targeted analyses to potential new TA pilot actions
- Hint on peer areas that have solutions to similar development challenges
- Help connect ESPON project researchers to pilot actions
- Offer ESPON maps and map-making facilities to pilot actions
- Scale up pilot action results to the European level (via outreach events, policy briefs etc.)

## WHAT CAN WE DO FOR ESPON?

- Test ESPON tools and project results via pilot actions (checklist approach)
- Unite with ESPON for joint presentations in European and national events.
- Promote ESPON in international events
- Reality check of ESPON evidence in local context (e.g. community actions)



Co-financed by the European Regional Development Fund

Inspire Policy Making with Territorial Evidence

espon.eu



# Thank you

[nicolas.rossignol@espon.eu](mailto:nicolas.rossignol@espon.eu)

<https://www.espon.eu>