



Interreg ALCOTRA



UNION EUROPÉENNE
UNIONE EUROPEA

Fonds européen de développement régional
Fondo europeo di sviluppo regionale

***INTEGRATED PLANS AND COMPLEX PROJECTS AT THE
SERVICE OF THE FRANCO-ITALIAN ALPINE TERRITORY***

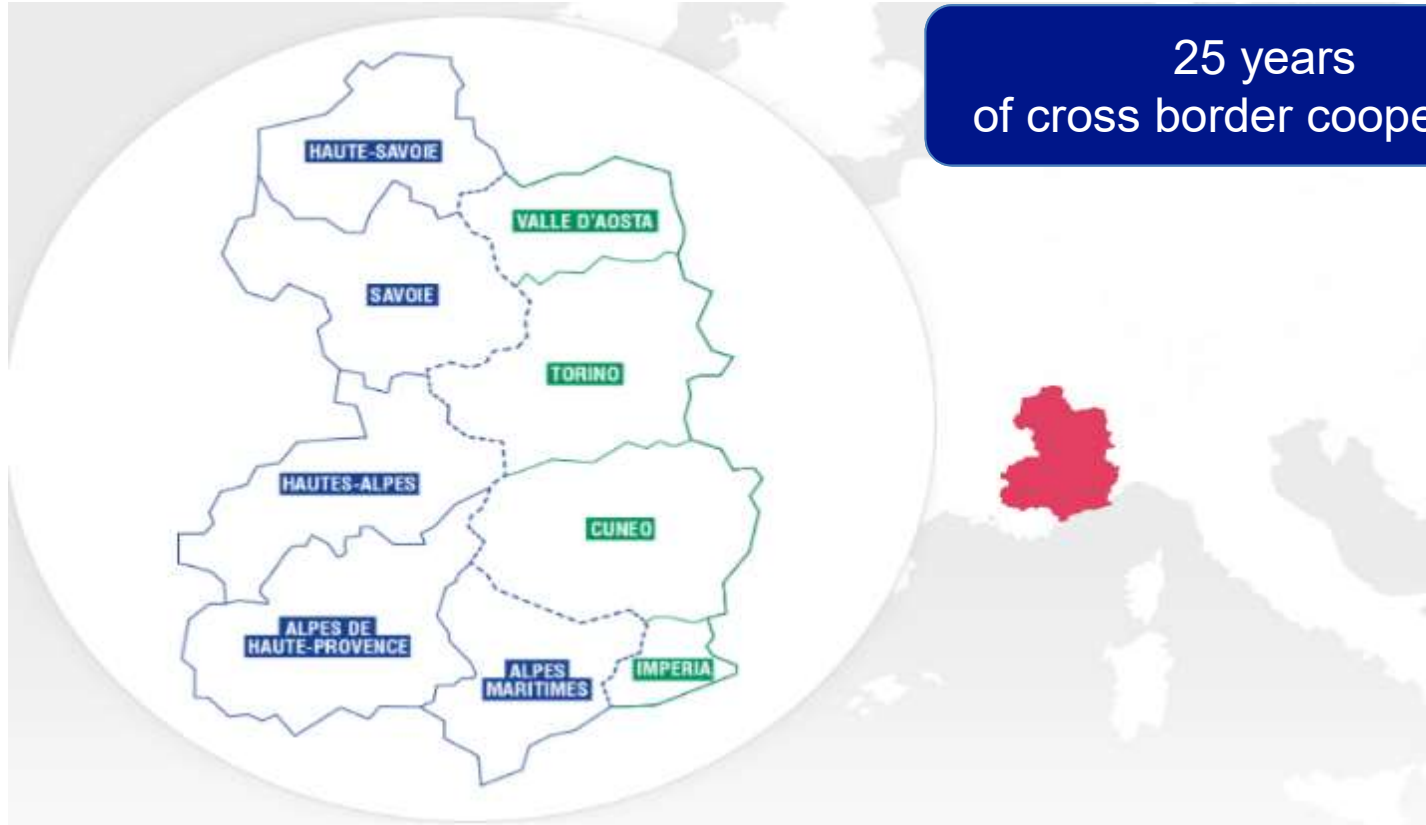
Alessandra Giovinazzo
Project officer
Joint Secretariat ALCOTRA



La Région
Auvergne-Rhône-Alpes

Autorité de gestion / Autorità di gestione
ALCOTRA 2014-2020

Cross-border cooperation in Latin Alps France - Italy



Auvergne-Rhône-Alpes Region
first time Managing Authority

199 M€ ERDF
in 2014-2020

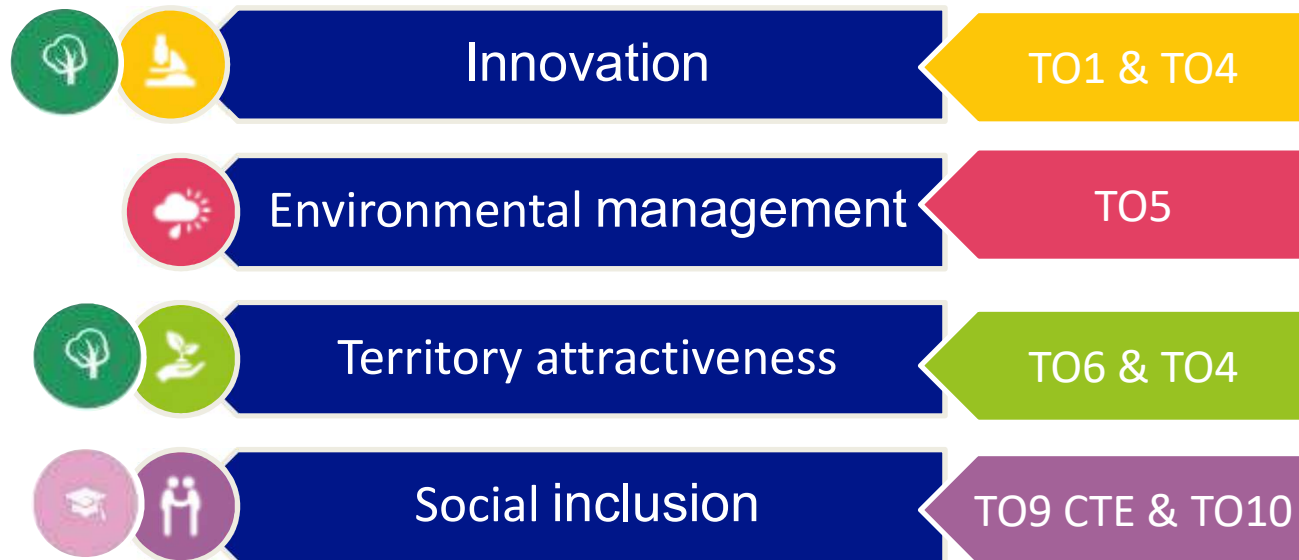
ALCOTRA aim is to improve the quality of life of the inhabitants and to promote sustainable development in the Western Alps

TOOLS

**1 – Single projects
or
2 – Integrated plans**

ALCOTRA: priority axes

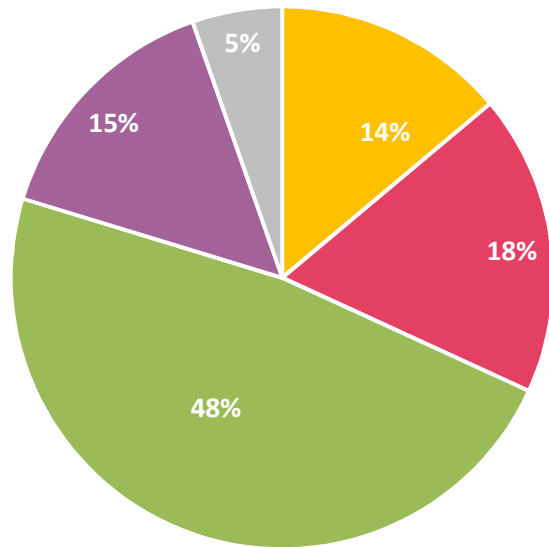
4 AXES



76 approved single projects, 12 integrated plans

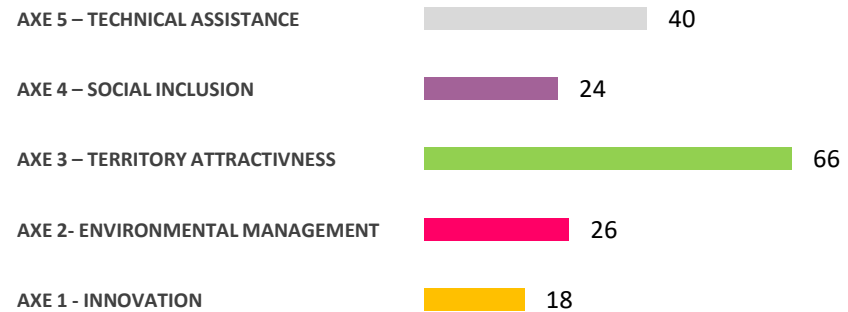
Important figures of the programme

Allocation of the ERDF by Axes

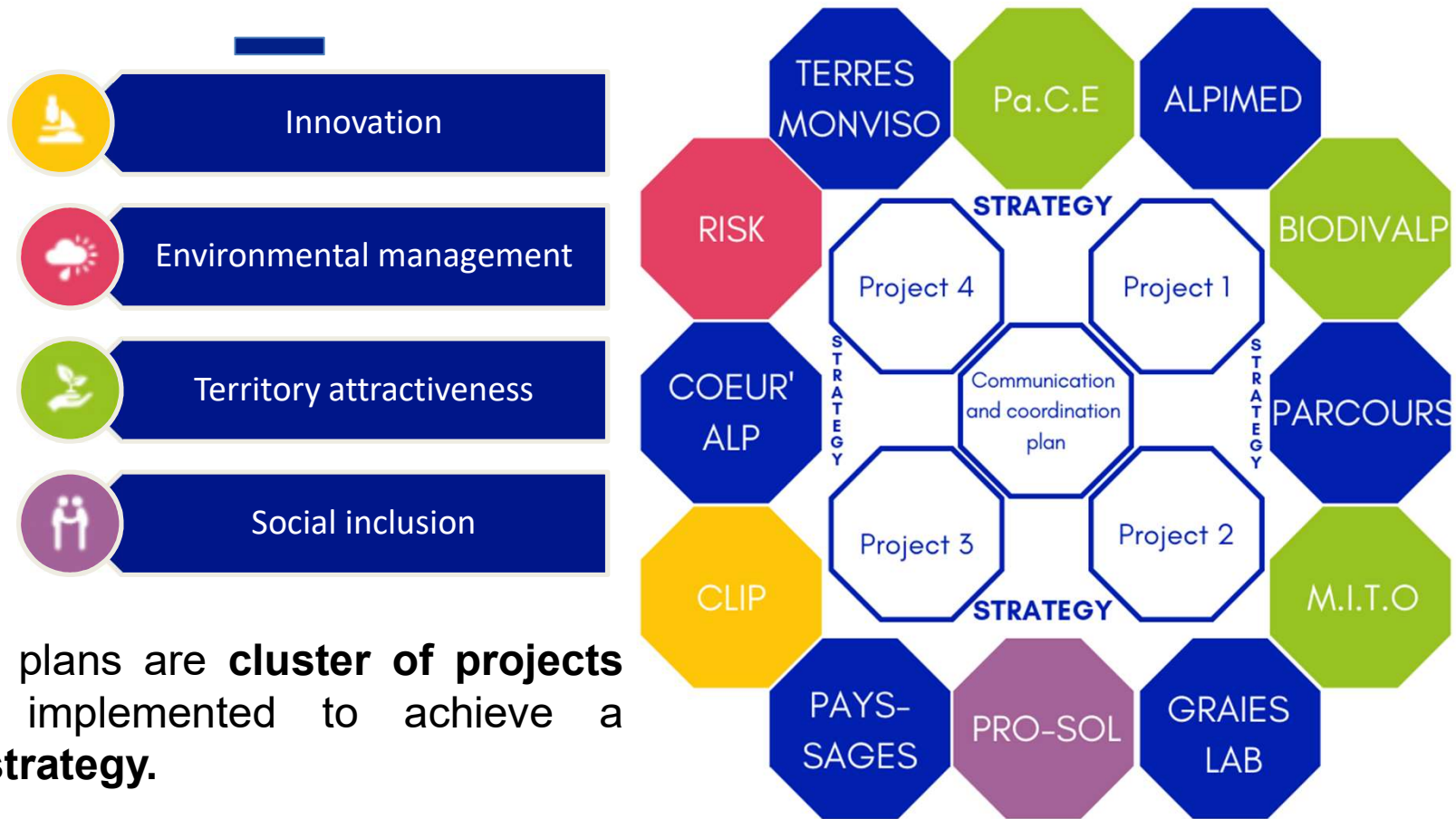


■ Axe 1 ■ Axe 2 ■ Axe 3 ■ Axe 4 ■ Axe 5

Number of single projects approved per axes



12 approved integrated plans



Integrated plans are **cluster of projects** that are implemented to achieve a common **strategy**.

ERDF: 80,5M€

Integrated plans – features : two types of plan

Territorial plan (PITER): they aim to promote the economic, social and environmental development of a cross-border territory, in order to face common threats

→ 1 plan, each project works on a different specific objective

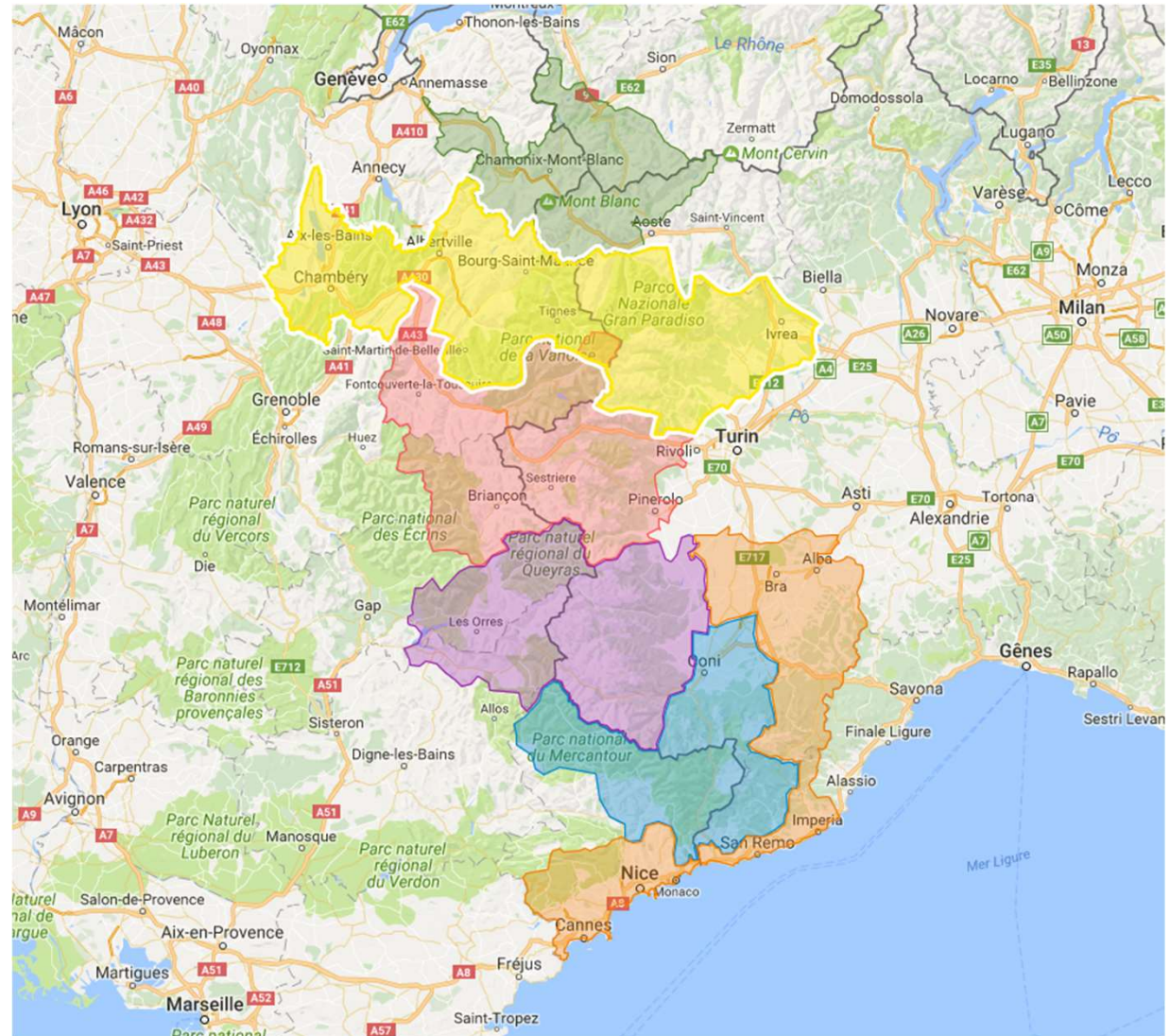
Thematic plan (PITEM): their objective is to lead to the capitalisation and swarming of approaches and to the sharing of tools between the different actors in relation to a specific topic

→ 1 plan, all the projects focus on the same specific objective

Map of the Territorial Plans



Parcours	Haute-Savoie – Vallée d'Aoste - Valais
Graies Lab	Savoie - Torino
Cœur'Alp	Savoie – Hautes-Alpes - Torino
Terres Monviso	Hautes-Alpes – Alpes-de-Haute-Provence - Cuneo
Alpimed	Alpes-Maritimes – Imperia - Cuneo
Pays-Sages	Alpes-Maritimes – Imperia - Cuneo



Integrated plans - features

- 10 partners / 1 coordinator + 3 maximum delegated subject for each partner
- 1 coordination project + maximum 4 projects
- Between 6 and 8 million ERDF for each plan
- Three-step application process
 - ✓ Plan proposal (expression of interest)
 - ✓ Strategy + minimum 3 projects
 - ✓ Further projects



PITER Cœur'Alp
ERDF: 7.155.000,00M€
**Coordinator: Syndicat
des Pays de Maurienne**

Main specific objective: To improve attractiveness and to **reduce disparities within the “High Valley” crossborder area, in order to become “a smart destination”**

Integrated plans – PITER Cœur Alp

Context

- A preserved natural environment and remarkable alpine landscapes
- A mountain territory with famous skiing areas (seasonal activities)
- The territory is attractive for tourists, less for residential and economic activities (lack of new investment in the productive economy, insufficient coverage of public services)
- Presence of an elevated proportion of inhabitants over 60 years of age; a weak demographic growth
- A territory increasingly vulnerable to natural risks, especially hydrogeological

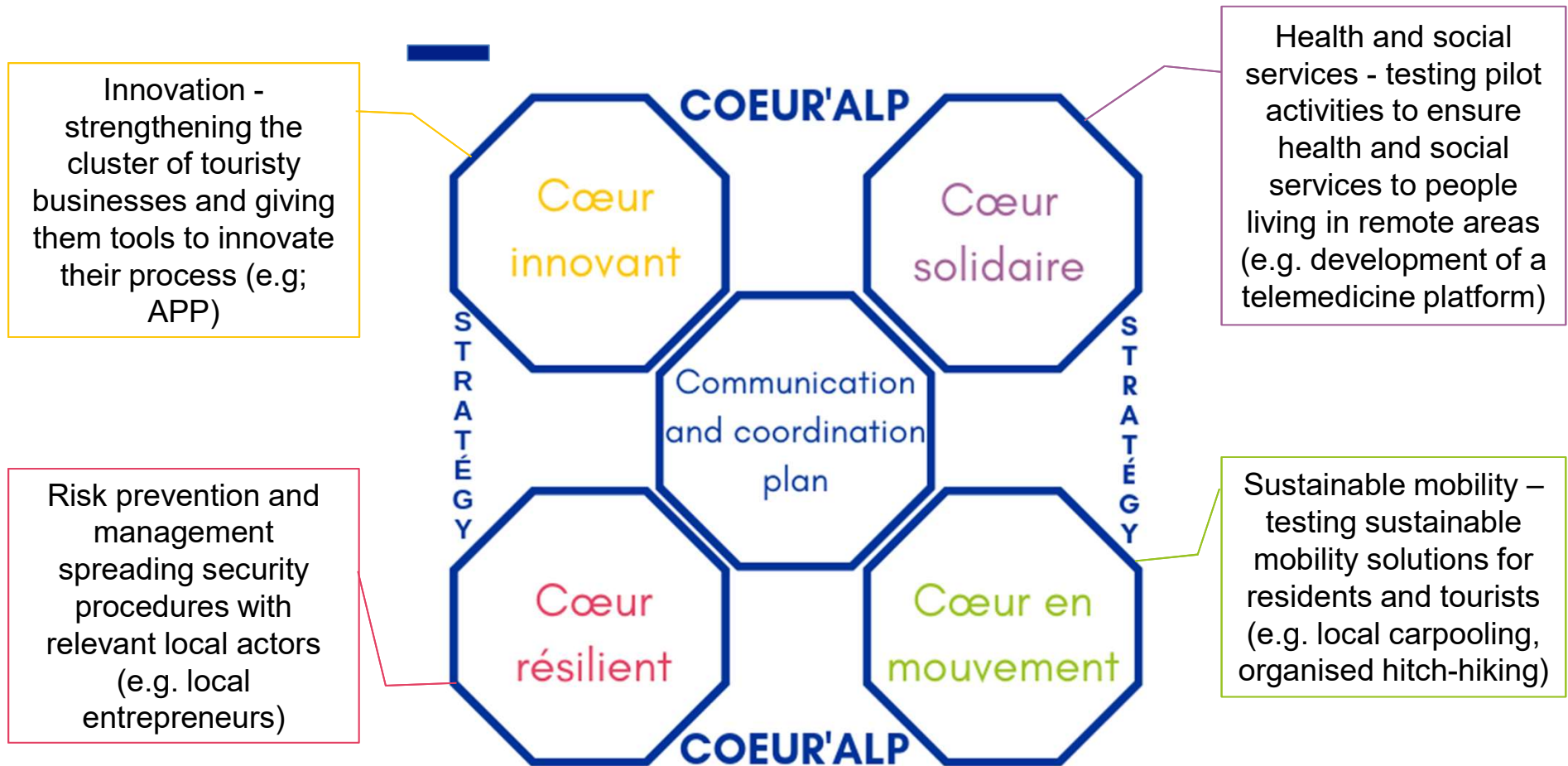
Integrated plans – PITER Cœur Alp



STRATEGY

The strategy aims to create conditions allowing to the cross-border area of High Valley to become a “**smart destination**” making territories reachable and attractive for inhabitants, tourists and for economic activities. **Tourism** is the key activity of this cross-border area; activity characterized by a high frequency in winter season and a polarisation on some towns (ski stations especially). The objective of this strategy is to preserve this attractiveness and to **reduce disparities** within the area.

Integrated plans – PITER Cœur Alp





PITEM Pro-Sol
ERDF: 6.588.400,00M€
Coordinator: Piedmont
Region

- Main specific objectives:**
- To improve accessibility to the health and social care services for people living in remote areas (young, senior, women)
 - To prevent diseases and reduce health care needs
 - To build collaborative communities in remote mountain areas, able to support vulnerable people

Integrated plans – PITEM Pro-Sol Context

- Progressive aging of the population (% > 65 years from 19% to 21%)
- Presence of critical areas for accessibility to health and social care services
- Fragmentation of services between private and public sectors
- Different models of management of health and social care services between Italy and France
- Decrease in resources to finance health and social care policies

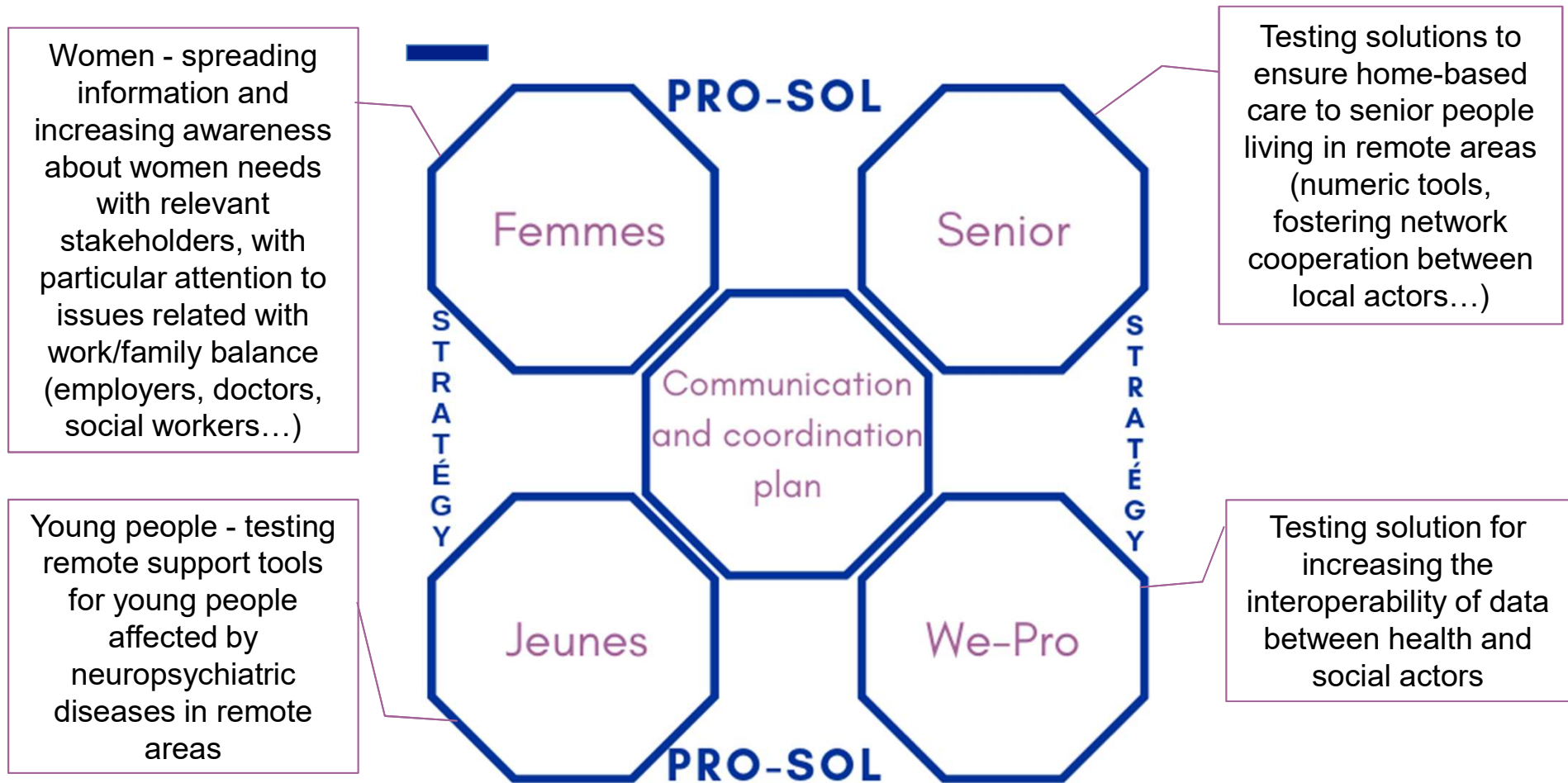
Integrated plans – PITEM PRO-SOL



STRATEGY

The plan aims to promote **social inclusion** and stabilisation on the mountain territory of **fragile populations** with predictable and manageable risk factors through combined solidarity actions: medical, socio-sanitary and social. It strengthens the **mountain ecosystem** in terms of **well-being** and health, supported by a network of services, communications and public/private social coordinated opportunities. Easy-to-use ICT media and new organizational models are instruments for responding to the needs of local communities.

Integrated plans – PITEM Prosol



Strengths of integrated plan approach

- The integrated plan are coherent with the ITI approach
- The territory is pushed to find multi-approach solutions to common issues
- Complex problems can be tackled with a consistent budget and under several perspectives
- Coexistence of thematic and territorial plans creates the opportunity of interacting with other plans merging two different approaches
- Coordinator have a prior knowledge of budget availability
- More phases in the application process allow the MA to express suggestions and recommendations on the strategy

Our questions for the future

- ✓ How the tool need to be adapted in order to respond to the PO 5 expectations?
- ✓ How to makes the plans simpler and more effective?
- ✓ Is it better to focus on a lower number of plans?
- ✓ How could the content of the projects be more focused by the MA on issues that are relevant to the program?
- ✓ How to push the partnership to capitalize on projects already carried out on other programmes?
- ✓ How could these plans integrate and create synergies with regional Programmes?

www.interreg-alcotra.eu



La Région
Auvergne-Rhône-Alpes

Autorité de gestion / Autorità di gestione
ALCOTRA 2014-2020