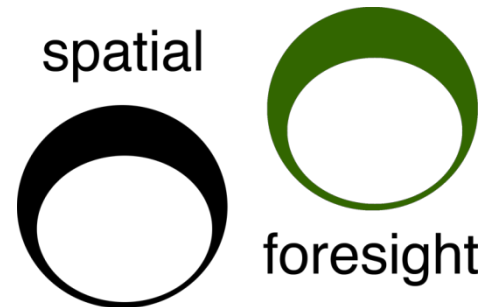


# Macro-regional Integrated Territorial Investment M - ITI

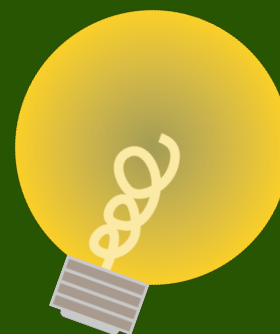
Maria Toptsidou  
Spatial Foresight



territorial policy support and [research](#)



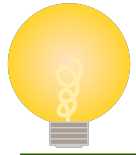
# M – ITI as a food for thought for the future of EUSBSR



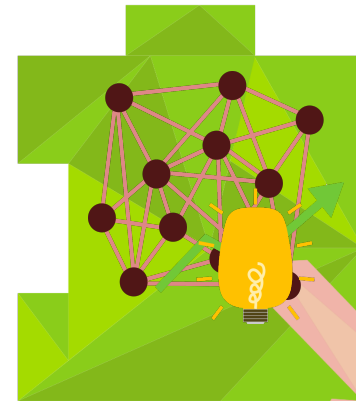
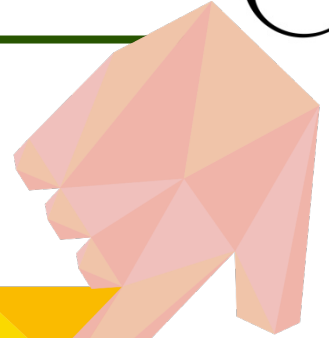
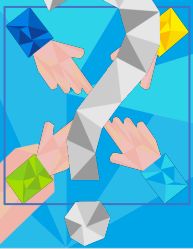
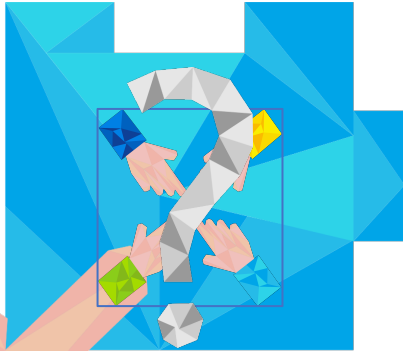
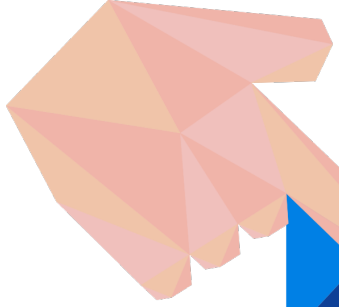
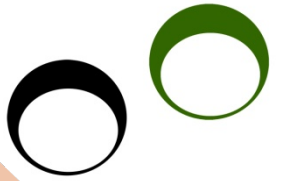
## EUSBSR after 2020: Governance remastered?



[www.spatialforesight.eu/tl\\_files/files/EUSBSR-after2020\\_Governance-Remastered\\_FinalReport\(1\).pdf](http://www.spatialforesight.eu/tl_files/files/EUSBSR-after2020_Governance-Remastered_FinalReport(1).pdf)

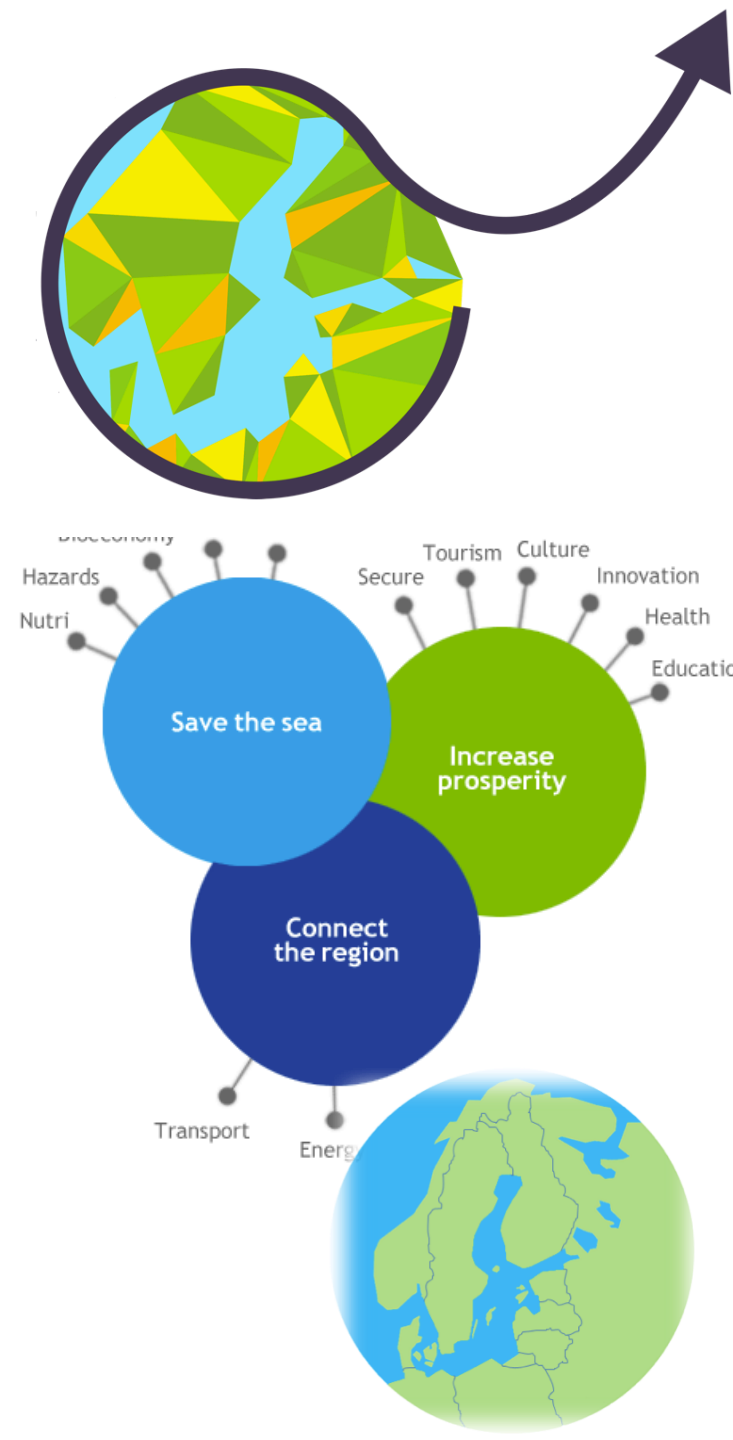


# Why a M - ITI?



2

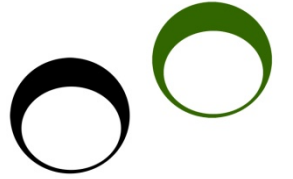
M – ITI put in practice



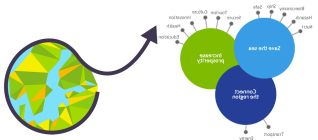


# M – ITI put in practice

---

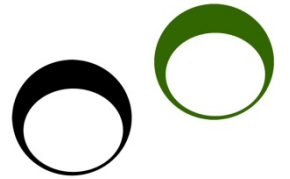


- Territory and a strategy.
- A package of actions.
- Governance for the M - ITI.
- Convince managing authorities.



# M – ITI for selected priorities

---

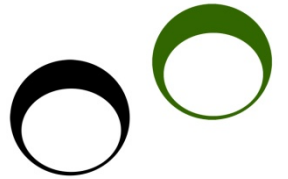


- Institutional coordination body for each policy area.
- Funding support for both coordination and flagships.
- Capitalisation of existing sources.
- More concrete, smaller scale, simpler and less managing authorities.



# M - ITI for the whole EUSBSR

---



- Central institutional coordination body for the whole area.
- Funding support for both coordination and flagships.
- Capitalisation of existing sources.
- Flexibility.
- More coordinated approach, more complicated to develop but more cooperation, all relevant managing authorities involved.



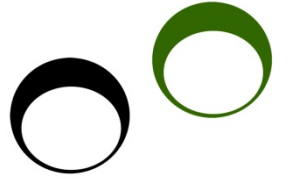
What next?





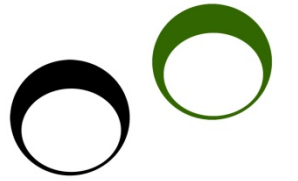
# You may say I am a dreamer...

---



- Bypassing 2 of the 3 NOs.
- Great flexibility.
- Strong cooperation and commitment from all players.
- Satisfied with existing solutions and ideas?
- Does it worth the effort to try?
- Or what are other alternatives?

# The EUSBSR future is up to you to create

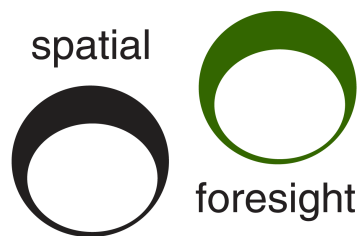
A large, thick, dark purple arrow originates from the bottom left, curves around the quote, and points towards the underlined title at the top right.

*“If you don’t know  
where you are going,  
it doesn't matter  
which path you take.”*

Alice in Wonderland

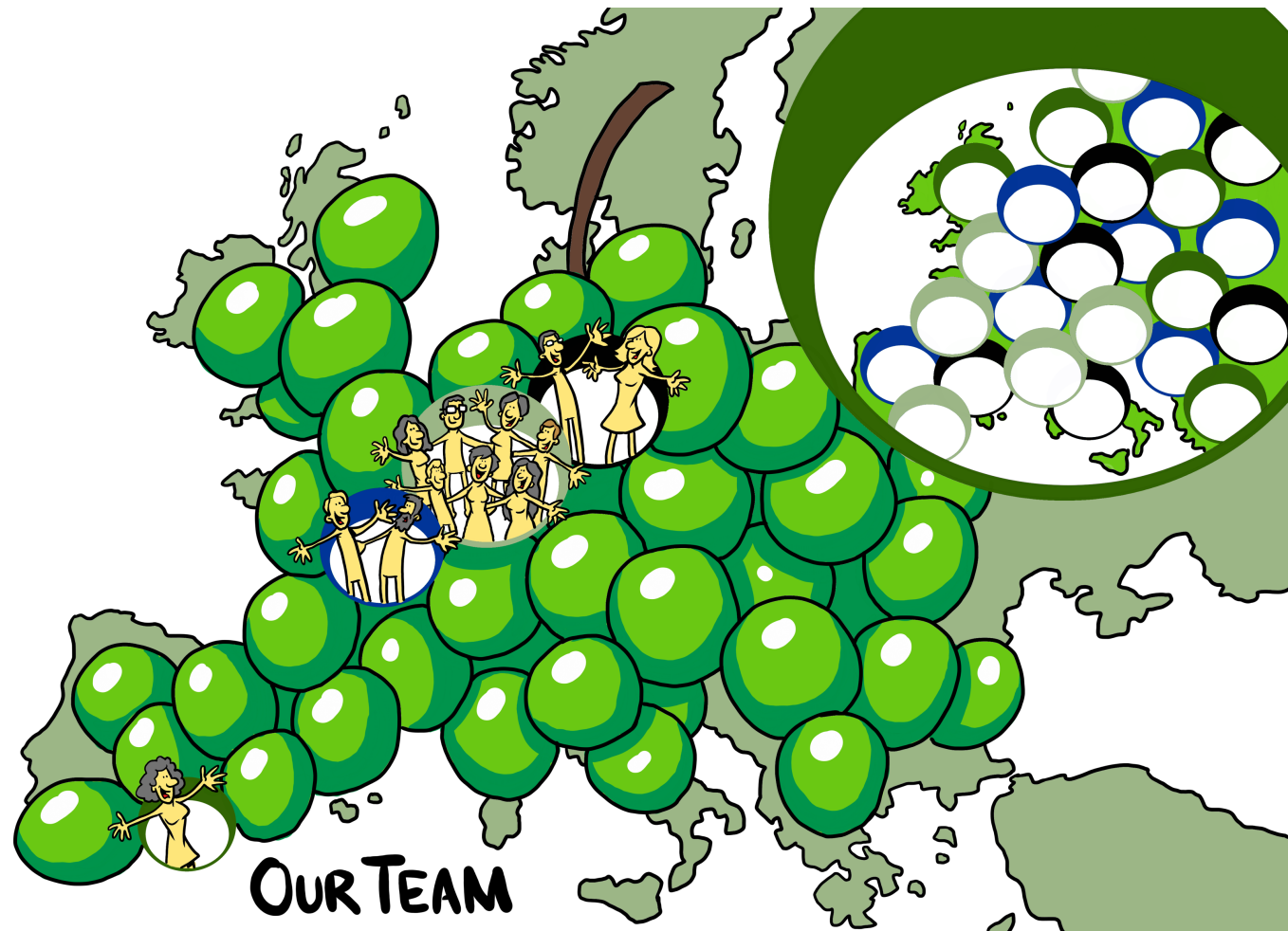
**Thank you for your  
attention!**

Maria Tóptsidou  
[maria.toptsidou@spatialforesight.eu](mailto:maria.toptsidou@spatialforesight.eu)



territorial policy support and [research](#)

[www.spatialforesight.eu](http://www.spatialforesight.eu)



**OUR TEAM**

[www.spatialforesight.eu/ten-years/html](http://www.spatialforesight.eu/ten-years/html)