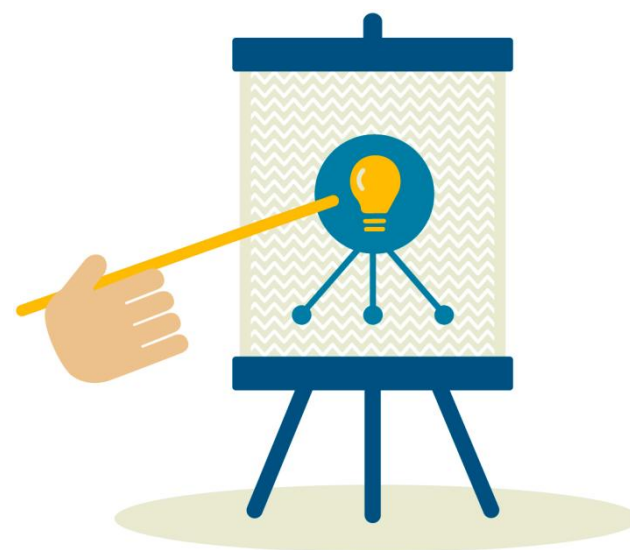


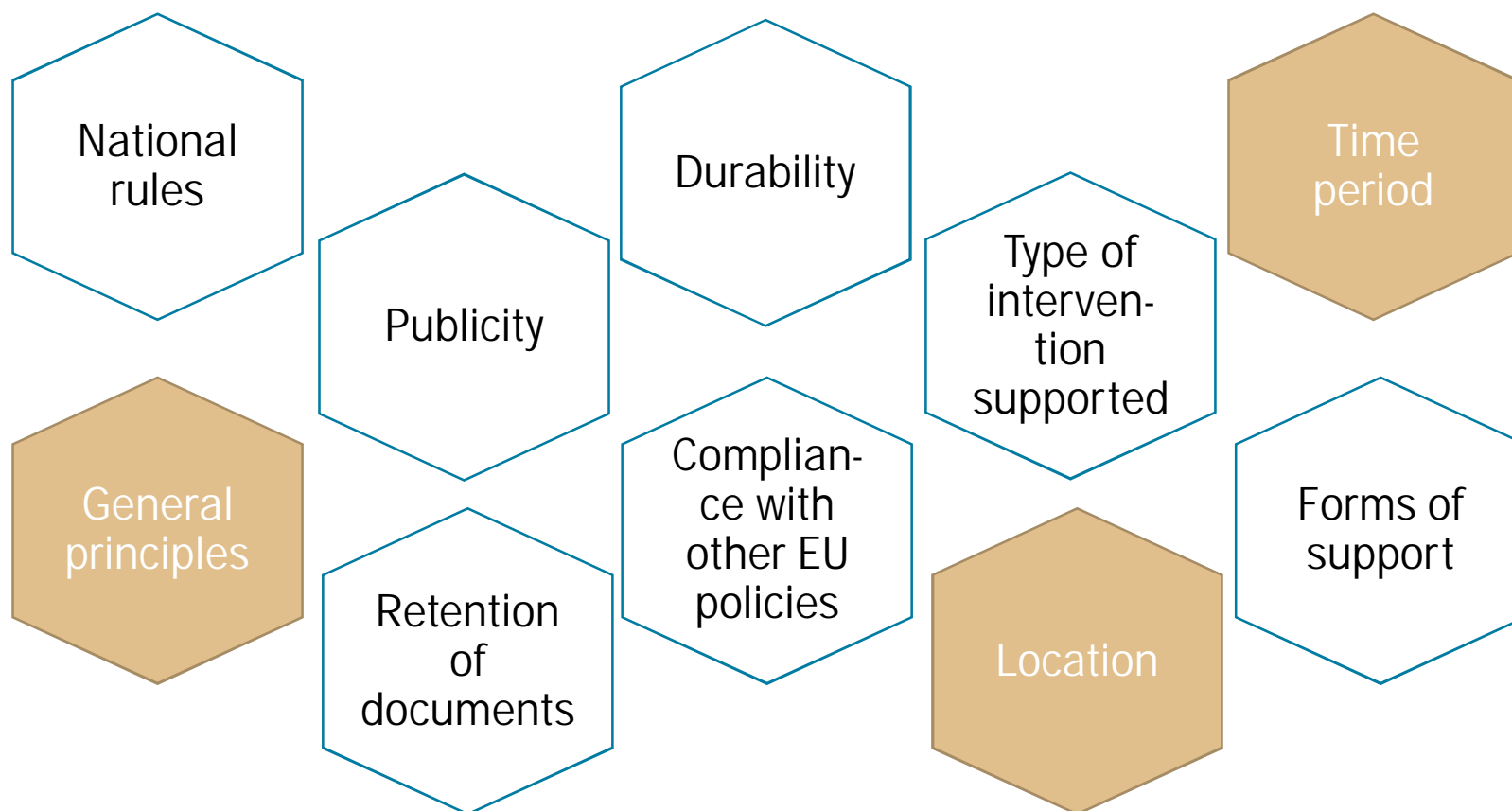
Eligibility and SCO – Current programming period 2014-2020

Network meeting of finance officers of
Interreg CBC and IPA-CBC programmes
16-17 October 2018 | Geneva, Switzerland

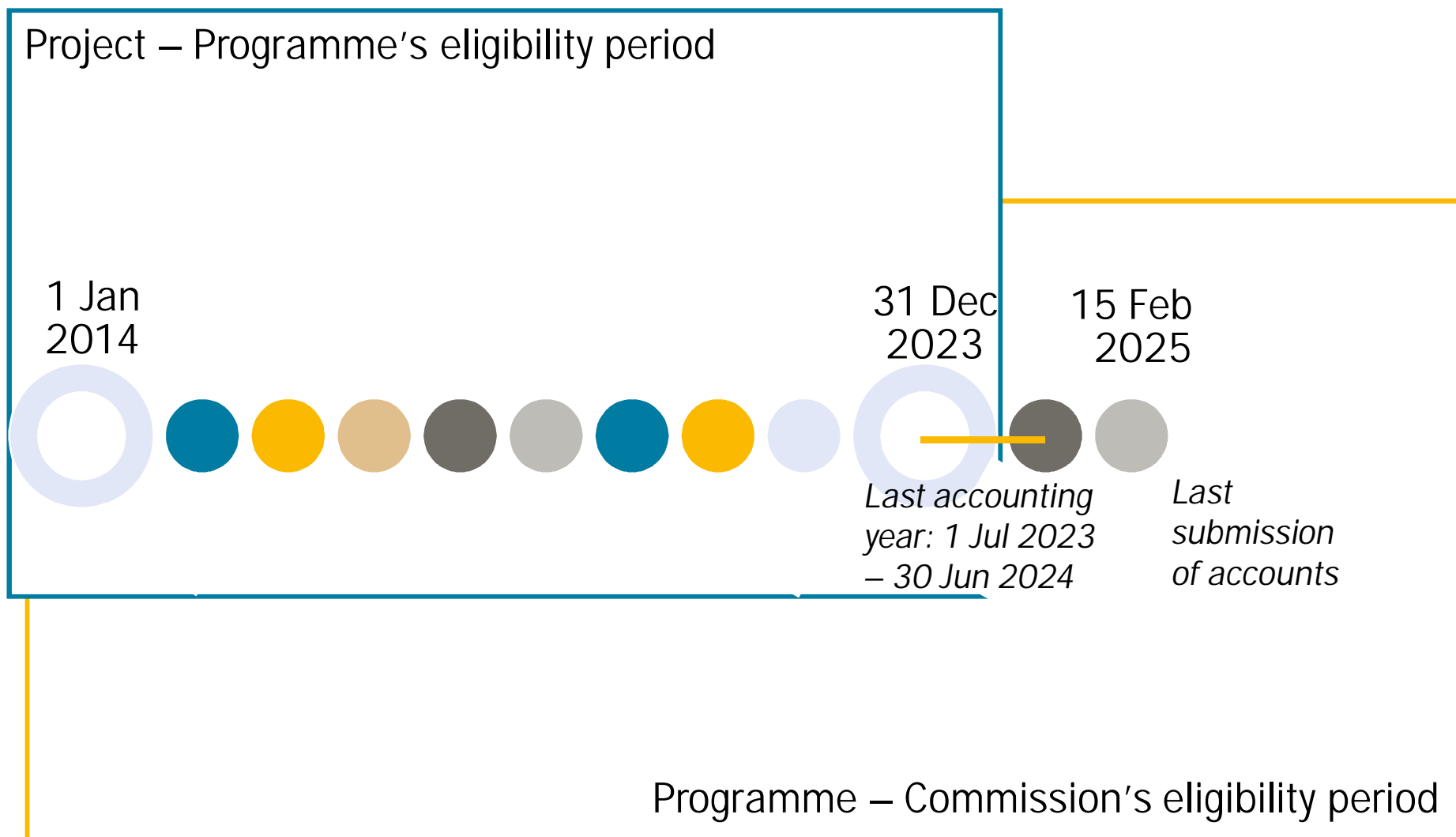
Iuliia Kauk, Interact



10 principles of eligibility of expenditure



Eligibility time frame



Eligibility of expenditures depending on location

- General rule – shall be located in the programme area
- MA may accept that a project is implemented outside the programme area but within the Union if:
 - Operation is of benefit of the programme area
 - The total amount of ERDF allocated under the programme to operations located outside the programme area does not exceed 20% of the support from the ERDF.

Commission Delegated Regulation (EU) No 481/2014



Staff costs



Office and administration



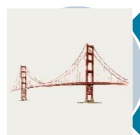
Travel and accommodation



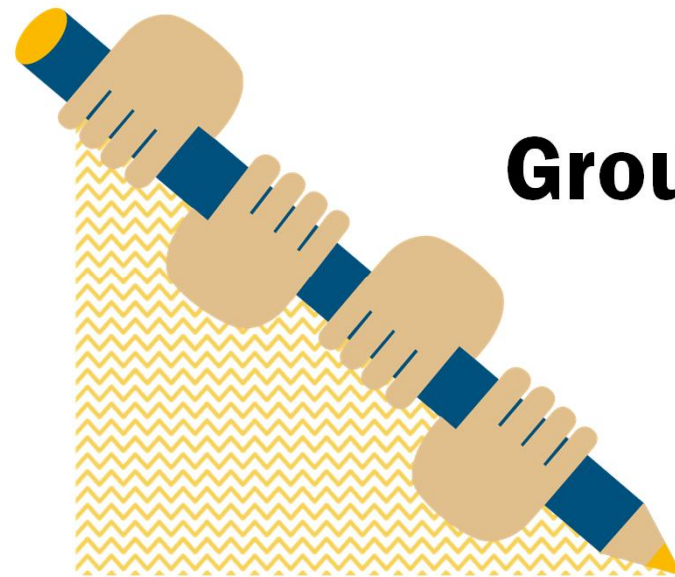
External expertise and services



Equipment



Other budget line(s)



Group work

Group work!

Timing:

25 minutes

Set-up:

1 table – 5 questions

Task:

- Discuss each question within the group – 5 mins per question
- If time left – discuss your own cases

Feedback (10 min):

Share 1 case/ situation with the whole group



Off-the-shelf simplified cost options

Flat rate financing
(Article 67d CPR)

Standard scales of unit costs
Article 67b CPR

Lump sums
Article 67c CPR

Flat rate

1. Indirect costs:

Article 68.1(a)

- Analysis of historical data (calculation method to be justified)

Article 68.1(b)

- Use of Article (no justification is needed)

2. Staff costs:

Article 19 ETC (Article 68a CPR)

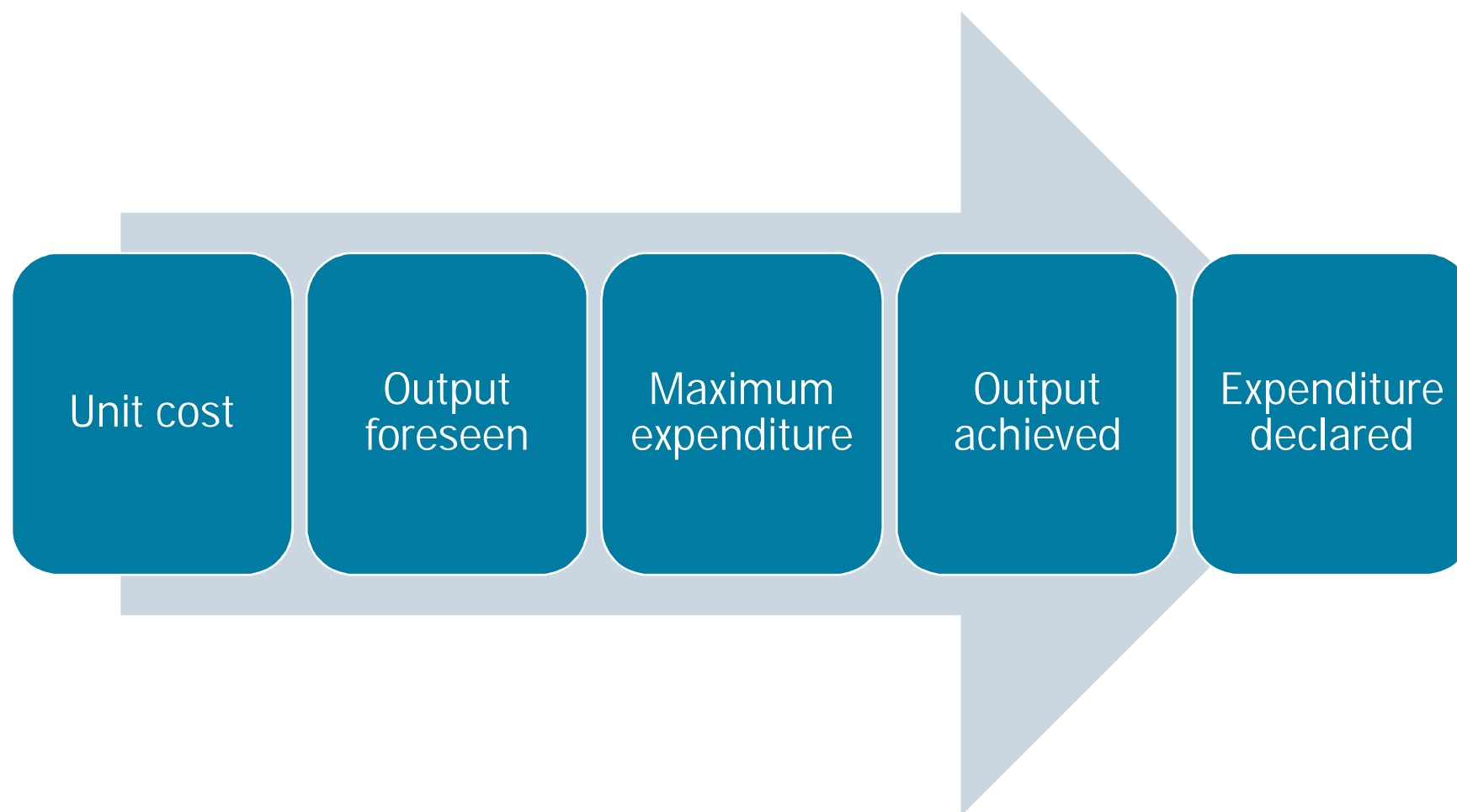
Staff costs may be calculated as a flat rate of up to 20% of the direct costs other than the staff costs of the operation

+ additions in Article 68a CPR (Omnibus)

- Existence of the relevant budget line, calculation method and its correct application

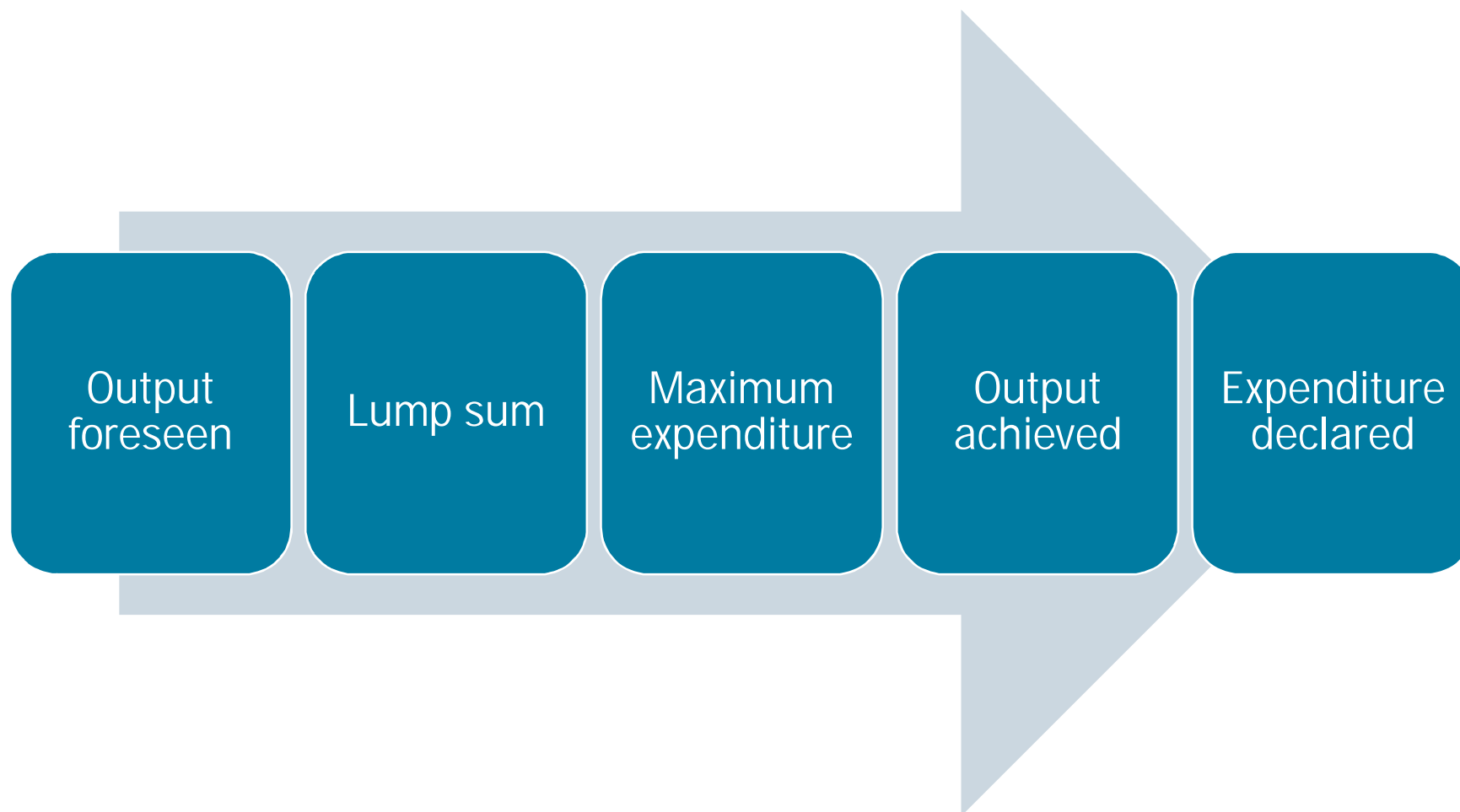
Standard scale of unit costs

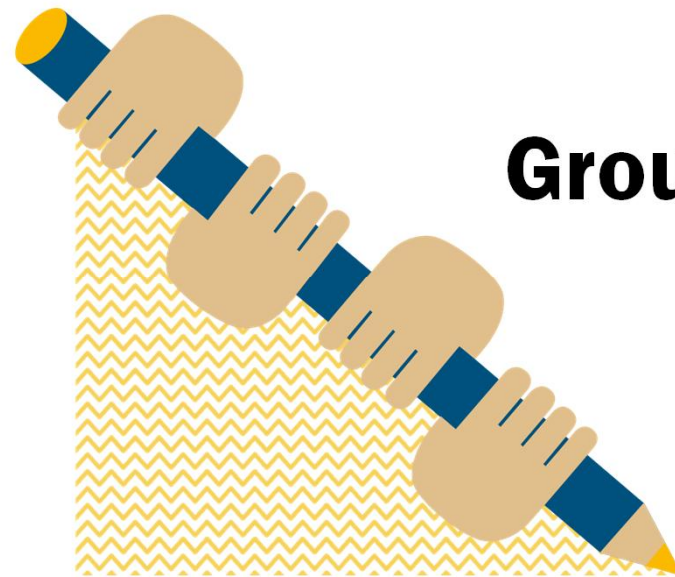
Costs fully justified on a calculated basis



Lumps sums

Costs fully justified on a calculated basis





Group work

Group work!

Timing:

10 minutes

Set-up:

1 table – 1 SCO

Task:

- Discuss if your table is an advocate or opponent of a specific SCO
- Support your position with advantages/ disadvantages of a specific SCO (min. 5 bullet points)

Feedback:

Briefly report to the whole group on the outcome of the discussion



Cooperation works

All materials will be available on:

www.interact-eu.net