



# **Performance framework 2014-2020**

**David Alba**  
**DG REGIO Evaluation and European Semester Unit**

**6 March 2018, Lisbon**

# Performance framework a pillar of result orientation

- ❑ **Results orientation** is about good understanding of the needs and choosing clear specific objectives that address these needs.
- ❑ It is also about a right mix of measures to achieve these objectives and selecting appropriate result indicators to show if the change expressed by the specific objective is taking place.
- ❑ However there is not impact without implementation.
- **Performance framework** is about implementing the programme efficiently and the way it has been planned.
- Programmes are rewarded for getting it right, but there may be as well a penalty for getting it very wrong.
- It has no intention and will not answer the impact question, because you may achieve the targets set in the performance framework, but still have no results.

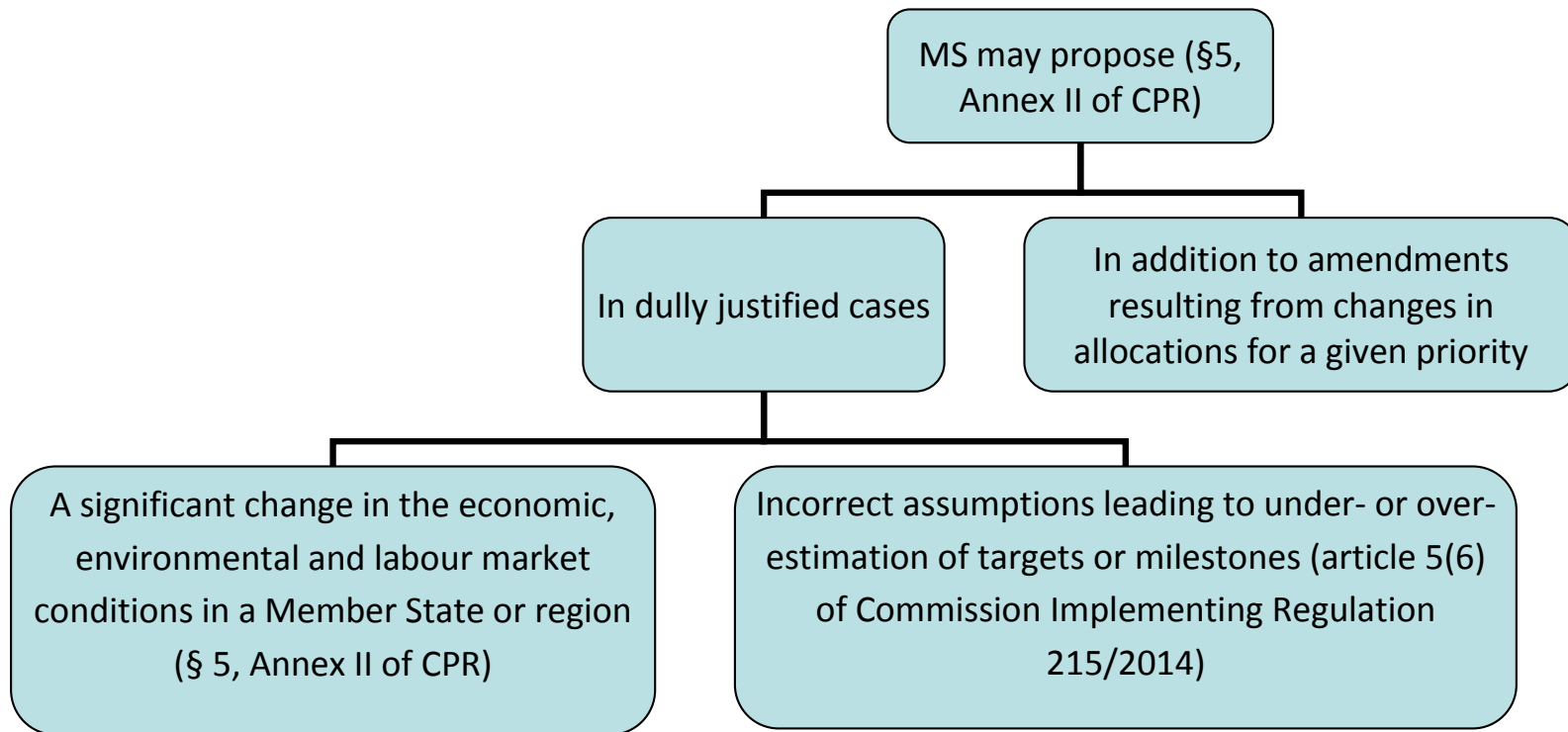
# Performance framework

- Present in all axes for all programmes (not for TA).
- Contains financial and output indicators and, sometimes key implementation steps may be used.
- Output indicators in the performance framework are subset of output indicators already selected for this priority axis. They must represent the majority of allocation. (this might have implications in monitoring)
- There are milestones and targets set for all indicators in each performance framework.
- The milestones are to be achieved by the end of 2018 and will be formally reviewed in 2019.
- The targets are to be achieved by the end of 2023 and will be formally reviewed in 2025.

## Where to find performance framework?

<b>Operational programme</b>	<p>Table 5 (ETC) or 6 (IGJ) - indicators and their measurement unit, milestone and target values (broken down by ESI Fund and category of region where relevant)</p> <p>Table 17 – allocation to the performance reserve broken down by year and ESI Fund.</p> <p>Table 18a – allocation to the performance reserve broken down by priority axis and union support / national counterpart.</p>
<b>Additional information</b>	<p>Allows verification if Annex II criteria has been met - to be provided at EC request in line with Implementing Regulation 215/2014.</p>
<b>Partnership agreement</b>	<p>Section 2.4 - mechanisms to ensure consistency of the performance framework across programmes (early detection of potential performance issues and the system for their follow-up optional)</p> <p>Table 9 - allocation to the performance reserve, broken down by ESI Fund and, where appropriate, by category of region.</p>

# Revision of milestones and targets



The submitted documentation should contain clear qualitative and quantitative reasoning supporting the arguments. Processing the modifications take time. The adopted version (at 31-12-2018) of the PF will be used for the review.

## Performance review

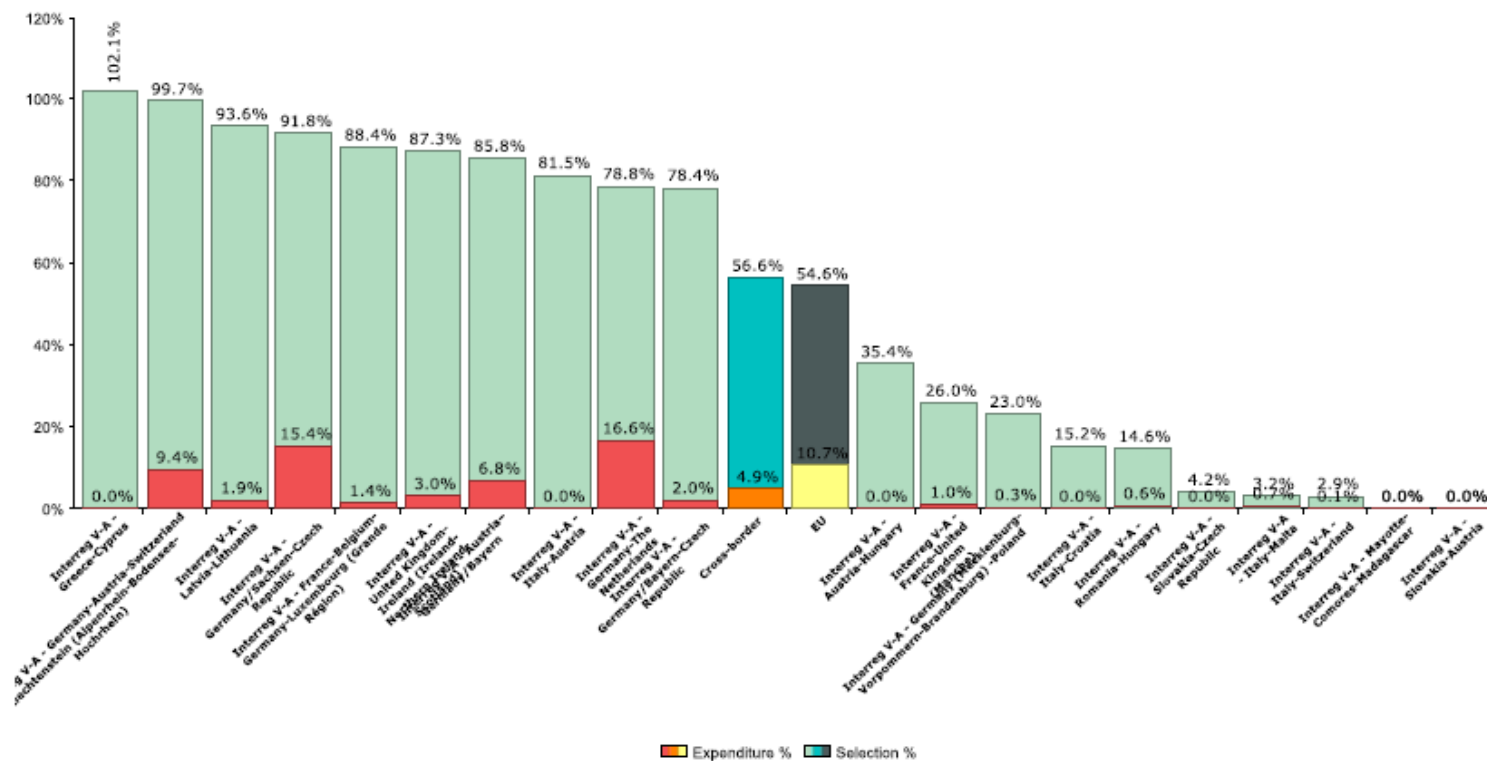
- examines the performance of the programmes at the level of priorities against the milestones set for the end of 2018
- carried out in 2019, based on the data input by the managing authorities into the SFC2014 system (no scope for negotiations)
- within two months from the receipt of the annual implementation report for 2018 (by end of June 2019 at the latest), the Commission adopts a decision, by means of implementing act, to determine for each Member State and ESI Fund, the programmes and priorities which have attained their milestones (by ESI Fund and by category of region for complex priorities)
- a priority will receive the reserve if all indicators selected in a corresponding performance framework have attained at least 85% of their milestones (if there are 3 or more indicators, one may attain less than 85% of its milestone, but no less than 75%)

## What is the serious failure?

A priority, whose performance framework includes	will be deemed to have...	if...
no more than 2 indicators	seriously failed to achieve the milestone or the target	any of these indicators has failed to attain by the end of 2018 at least 65% of milestone value or by the end of 2023 at least 65% of the target value
more than 2 indicators		at least two of these indicators has failed to attain by the end of 2018 at least 65% of milestone value or by the end of 2023 at least 65% of the target value

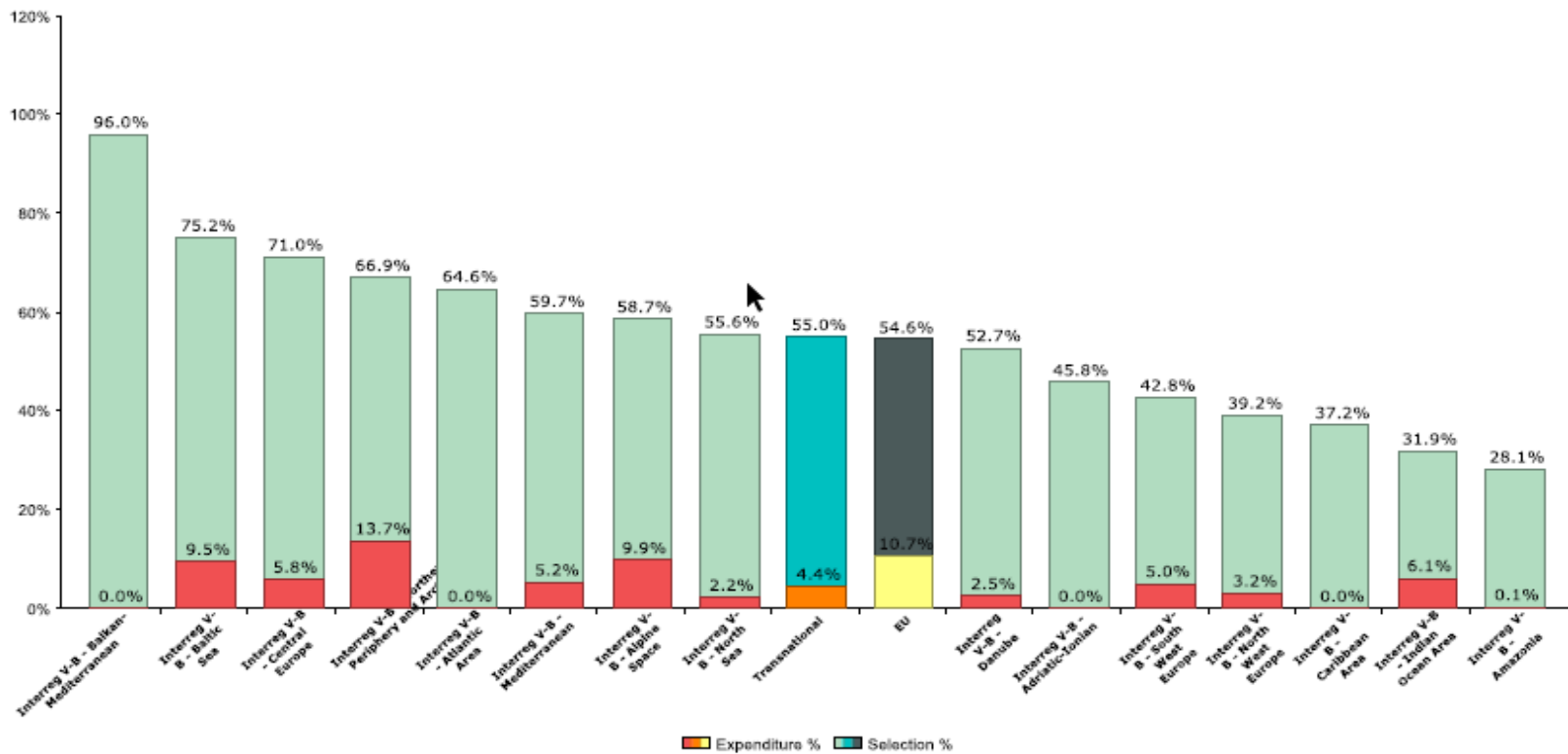
If a priority concerns more than one ESI Fund or more than one category of region, the assessment has to be carried out by Fund and by category of region within that priority.

# Interreg CB state of play





# Interreg TN state of play



# PF state of play 12/2017

Number of Performance Frameworks

CB	Higher than 60%	Between 30% and 60%	Lower than 30%
RATE OF EXPENDITURE	43	20	144
CB	Higher than 140%	Between 100% and 140%	Lower than 100%
RATE OF PROJECT SELECTION	169	5	33

Number of Performance Frameworks

TN	Higher than 60%	Between 30% and 60%	Lower than 30%
RATE OF EXPENDITURE	15	19	40
TN	Higher than 140%	Between 100% and 140%	Lower than 100%
RATE OF PROJECT SELECTION	62	1	11

# Suspension of payments

**The EC may suspend all or part of an interim payment of a priority of a programme if the following conditions are jointly met:**

- A serious failure to achieve the milestones (only financial and output indicators, and key implementation steps) due to clearly identified implementation weakness.
- The EC has communicated previously to the managing authority this clearly identified implementation weaknesses and the MS has failed to take the necessary corrective action to address it.
- Not earlier than five months after the communication to the managing authority.

# Financial corrections

**At the end of programming period, the EC may apply financial corrections if the following conditions are jointly met:**

- a serious failure to achieve the targets (only financial and output indicators, and key implementation steps) due to clearly identified implementation weakness.
- The EC has communicated previously to the managing authority this clearly identified implementation weaknesses and the MS has failed to take the necessary corrective action to address it.
- No socio-economic or environmental factors, significant changes in the economic or environmental conditions in a Member State or force majeure seriously affecting implementation of the priorities concerned.

## Level of financial correction

The achievement/absorption coefficient will indicate an appropriate flat rate.

achievement/absorption coefficient	rate of financial correction
<b>&gt; 65%</b>	0
<b>65% &gt; ... ≥ 60%</b>	5%
<b>60% &gt; ... ≥ 50%</b>	10%
<b>&gt; 50%</b>	25%

The external factors contributing to the failure, will be considered on case by case basis, and may be a justification for an even lower rate of correction than set out above.

In such situations the rate of correction may be lowered by up to 50%, depending on the importance of contribution of these factors.

# **Determination of milestones and targets for output indicators in the performance framework**

**Amendments in Article 5 (3) /  
Commission Implementing  
Regulation (EU) 215/2014**

# Amendments proposed

- In article 5(3), which sets the requirements for the output indicators in the performance framework, the wording for the ERDF, Cohesion Fund and EAFRD to be aligned with the ESF (reporting values based on operations reported in full or on those, which have been started, but where some of the actions leading to outputs are still ongoing);
- The EMFF to maintain requirement for output indicators in the performance framework to refer to the "operations implemented in full".

# References

## [InfoRegio / Information sources / Legislation and guidance](#)

- Common Provisions Regulation – articles 20-22 and Annex II
- Commission Implementing Regulation (EU) No 215/2014 of 7/03/14
- Commission Delegated Regulation (EU) No 480/2014 of 3/03/2014

## [Regiowiki / Regulation / Regulatory Framework / ESIF / ESIF – Guidance / Performance Framework](#)

- Guidance on Performance Framework, Review and Reserve
- Common approach to the revision of milestones and targets in the performance framework
- Guidance on the appropriateness of output indicators and the plausibility check for output targets