

INTERREG : Lisbon Seminar 6-7 March 2018 AIR 2016 feedback

**REGIO Evaluation and
European Semester Unit**
Twitter: [@RegioEvaluation](https://twitter.com/RegioEvaluation)



AIR 2016 (31/12/2016 data)

AIR 2016 - DATA Overview – ERDF/CF

- **2017 Strategic Report + Open Data site: 2016 values and adapted visualisations (timeseries + 2016 data)**
- **Scope of reporting**
- **Targets vs implemented**
- **Other issues**



Achievements – progress towards targets:

by fund / Member State / programme
=> ERDF

FIRMS: All firms

All firms receiving support

Planned: 1 096 987 Enterprises

Decided: 455 194 Enterprises

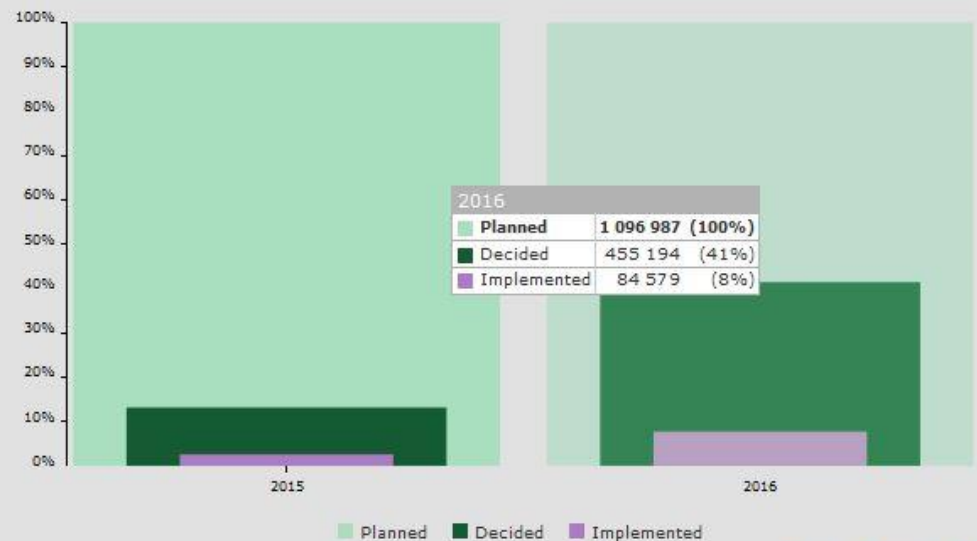
Implemented: 84 579 Enterprises

Overview of programme targets



Austria Malta Cyprus Romania Netherlands Lithuania Latvia Denmark Croatia Slovenia
 Estonia Bulgaria Belgium Finland Slovakia Czech Republic Sweden Portugal Interreg
 Greece Germany Poland Hungary Ireland Italy Spain France United Kingdom

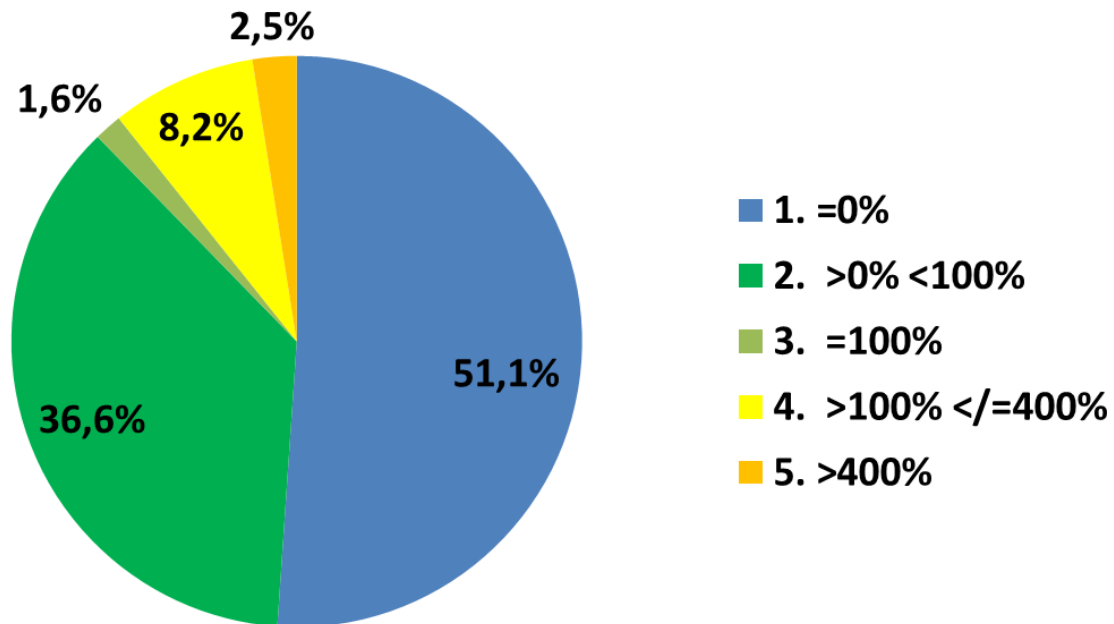
Implementation Progress



Refresh Date: 12/12/2017

ERDF/ Cohesion Fund: IGJ reporting of Common indicators (31/12/2016 as @4/12/17)

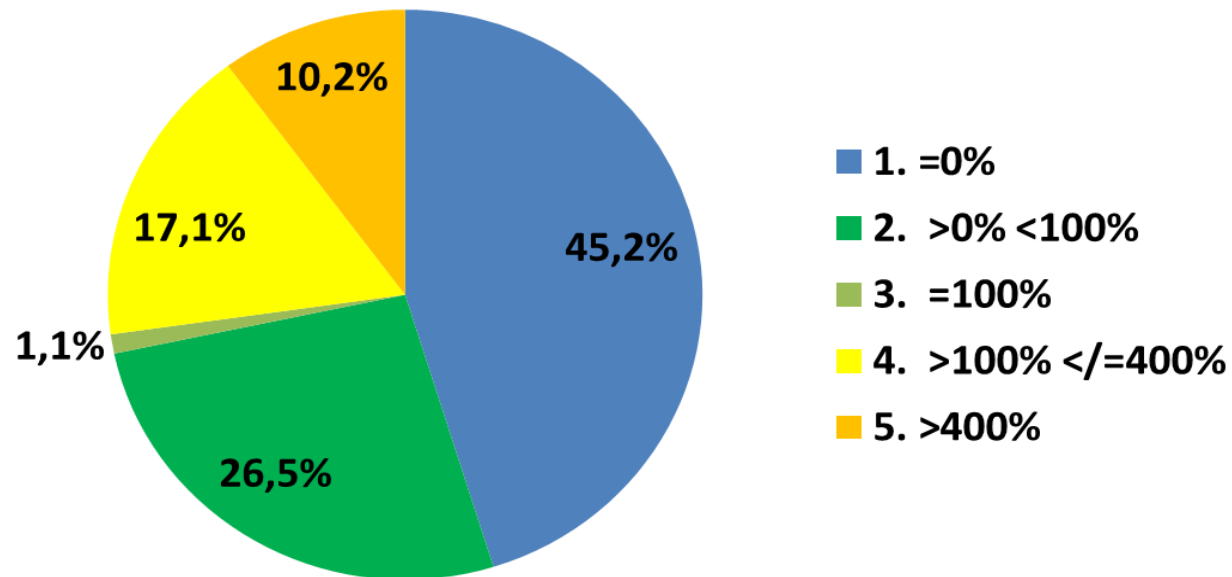
IGJ AIR 2016 - # Common indicator forecast values reported vs target



Uses by OP /IP		%
1. =0%	2 706	51,09%
2. >0% <100%	1 940	36,62%
3. =100%	83	1,57%
4. >100% <=400%	436	8,23%
5. >400%	132	2,49%
Grand Total	5 297	100,00%

ERDF/ Cohesion Fund: TC reporting of Common indicators (31/12/2016 as @4/12/17)

**ETC AIR 2016 - Common indicator forecast values
reported vs target**



Uses by OP /IP		%
1. =0%	249	45,2%
2. >0% <100%	146	26,5%
3. =100%	6	1,1%
4. >100% <=400%	94	17,1%
5. >400%	56	10,2%
Grand Total	551	100,0%

Key messages

- **Under reporting of indicator values (compared to financial project selection) in programmes in ES, FR, IT and others;**
- **Issues with target setting; initial MA caution vs beneficiary optimism**
- **Or problem with forecast values**
 1. Definitions: challenges with new common indicators? are beneficiaries / MAs confident using them?
 2. Measurement unit ... still issues (EUR \neq EUR million; M² \neq Ha \neq Km²; Kw \neq Mw \neq MW/hr)
- **Simple encoding errors: decimal places, misplacing values, are programmes following a “four eyes” approach?**

Key messages - TC specific

The ERDF common output indicators are not always relevant; less used in TC than under IGJ

(8 vs 26 common indicators on average, respectively)

- **Target setting issues seem more prevalent under TC:**
 - a) Were targets set on “token” basis with a view to later revisions?
 - b) Do forecast values relate to outputs directly financed by the programme?
(i.e. enterprises directly supported by programmes vs indirectly by network members? population benefitting from risk reduction?)
- **Is progress under TC programme specific indicators more reliable / plausible ?**

Next steps

- **SFC2014 – for AIR 2017 (due May 2018) Input control (warnings);**
 - If “forecast from selected” > “target” ;
 - if “Implemented” > “selected” / “target”
 - Announcement soon on SFC2014
- **Managing authority role: Avoid adjusting targets regularly; clearly justify changes when proposed;**
- **2019 Performance review: a good opportunity to adjust final targets;**

Categorisation

- [guidance categorisation climate en.pdf](#)
- **Open Data and metadata ;**
<https://cohesiondata.ec.europa.eu/EU-Level/ESIF-2014-2020-categorisation-ERDF-ESF-CF-planned-/3kkx-ekfq>

Q+A on completing the IGJ – ETC AIR template

- [AIR Template - QA on model.pdf](#)
- To be revised and updated in next months

#ESIFOpenData 2017-2018

DECEMBER 2017 (Strategic report)

- Autumn Financial Data
- December 2016 indicator data
- Major Project dataset (updated)

FEBRUARY 2018

- December Financial Data

