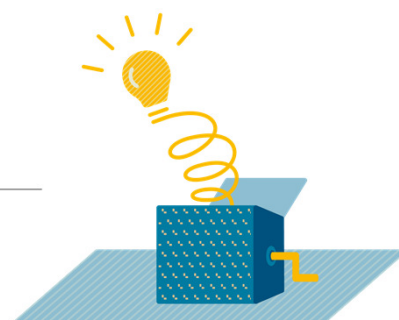


Project Idea Generation

Interreg Finance Management Camp
04-07 July 2017 | Riga, Latvia
 @InteractEU

Robert Mazurkiewicz, Interact Programme



Inspiration

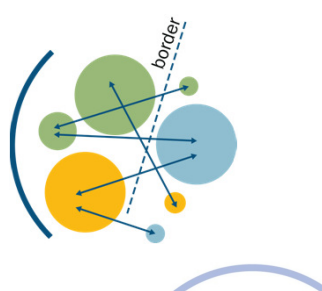
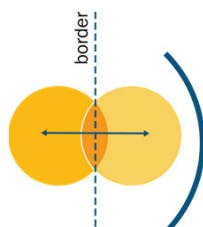
Every project starts with an **idea** which is inspired by a **need** or a **problem** that has been insufficiently solved, or not solved at all.

The Interreg context

joint need

vs.

common need



Partnership

There is no one golden solution for the right partnership.

It depends on what is to be achieved.

In general, the right partners are those who can turn your idea into a unified set of activities and convincing results.

Key criteria for partners are:

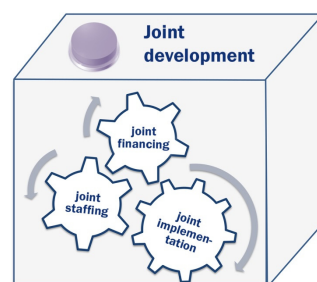
- Shared needs and complementary expertise
- Knowledge of the relevant issues
- Commitment, enthusiasm and trust
- Financial reliability

**Partnerships must not be put together
to impress the programme!**



Partner roles

- Lead partner
- Project partner
- Assimilated partner
- Associated partner / Observer



- Project manager
- Work package leader
- Working group leader



The Lead Partner Principle



The Lead Partner Principle (LPP) is one of the most important features of Interreg programmes.

The lead partner is the formal link between the project partners and the respective programme.

Main (key) responsibilities:

- Partnership-building process.
- Formulating objectives together with other partners; project plan and structure of activities.
- Coordinating between project partners, keeping them involved and ensuring that their suggestions are taken on board.



Responsibilities: LP vs PP

	Lead partner (LP)	Project partner (PP)
Project idea generation	Owner of the idea (usually) Coordinates the process	Actively involved
Project development	Coordinates the process Signs and submits the application	Actively involved Provides necessary doc
Contracting and start-up	Coordinates clarification process Signs subsidy contract Prepares partnership agreement	Signs partnership agreement
Project implementation	Overall coordination Verifies expenditures and submits progress reports to the programme Receives payments from the programme Transfers funds to the partners	Implements assigned activities Ensures that expenditure has been certified Submits reports to the LP
Project closure	Pays back any amounts which have to be recovered to the programme, and recovers these funds from the PP	Responsible and liable for irregularities in the expenditure it has declared



Cooperation works

All materials will be available on:

www.interact-eu.net

Contact: Robert Mazurkiewicz, robert.mazurkiewicz@interact-eu.net

